



# WA5

## Parts List

AAWA5

**AA FIRST is a division of CIRCON LTD: Registered in England 5121722**

### UK HQ:

Cedar House  
Grange Farm  
Long Lane  
Newbury, RG14 2TF

T: +44 (0) 1635 202489  
E: [enquiries@aafirst.co.uk](mailto:enquiries@aafirst.co.uk)  
W: [aafirst.co.uk](http://aafirst.co.uk)

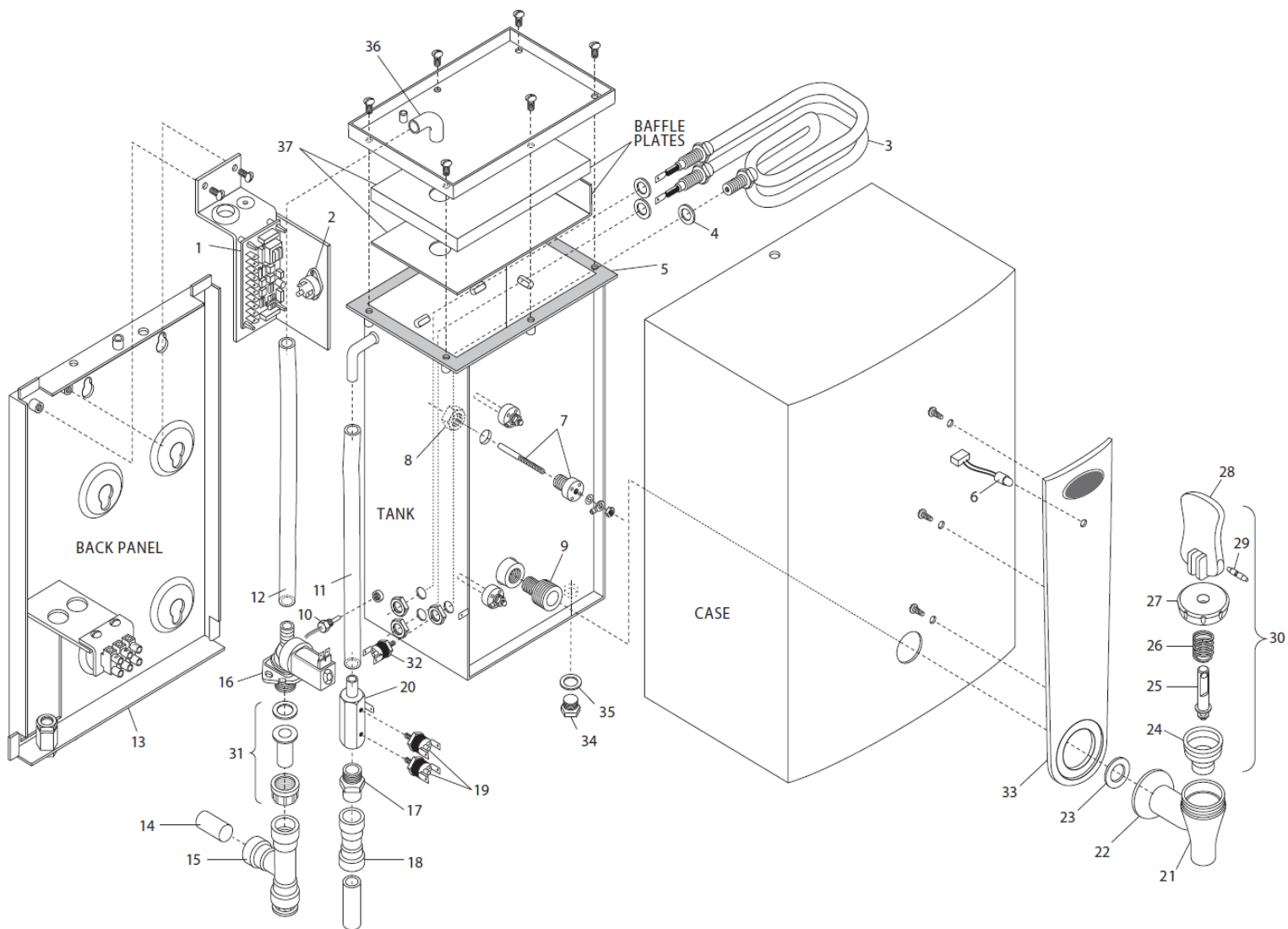
### FRENCH HQ:

T: +33 (0) 674 437 445  
E: [derek@aafirst.eu](mailto:derek@aafirst.eu)  
W: [aafirst.fr](http://aafirst.fr)  
T: +33 (0) 670 817 660  
E: [marike@aafirst.eu](mailto:marike@aafirst.eu)  
W: [aafirst.fr](http://aafirst.fr)  
W: [aafirst.de](http://aafirst.de)

**AA FIRST**  
*Quality – Reliability – Integrity*



## WA5 Wall-Mounted Water Boiler Parts List



**AA FIRST is a division of CIRCON LTD: Registered in England 5121722**

**UK HQ:**

Cedar House  
Grange Farm  
Long Lane  
Newbury, RG14 2TF

T: +44 (0) 1635 202489  
E: [enquiries@aafirst.co.uk](mailto:enquiries@aafirst.co.uk)  
W: [aafirst.co.uk](http://aafirst.co.uk)

**FRENCH HQ:**

T: +33 (0) 674 437 445  
E: [derek@aafirst.eu](mailto:derek@aafirst.eu)  
W: [aafirst.fr](http://aafirst.fr)  
W: [aafirst.de](http://aafirst.de)

T: +33 (0) 670 817 660  
E: [marike@aafirst.eu](mailto:marike@aafirst.eu)  
W: [aafirst.fr](http://aafirst.fr)  
W: [aafirst.de](http://aafirst.de)

NO.	DESCRIPTION	CODE	REMARKS
1	Main Control Circuit Board (XE150G-SP)	IN1516	
2	Triac (25A) (XE851-SP)	IN1507	
3	Element (XEN175-SP)	IN1503	
4	Element Washer (silicone rubber) (XEN100/W-SP)		Not Stocked
5	Tank Gasket (WEN5G/N-SP)	INWA05	Not Stocked
6	Tri-coloured LED c/w flying lead (XE152-SP)		Not Stocked
7	Probe Assembly (PRBI/A)		Not Stocked
8	Hex Nut (T514/SS-SP)		Not Stocked
9	Brass tank adaptor (XTP1019/HS-SP)		Not Stocked
10	Thermistor Stick On (XE853-SP)		Not Stocked
10	Thermistor Screw In (XE853/PRB-SP)		Not Stocked
11	Overflow silicone tube (per Metre) (SR2-SP)		Not Stocked
12	Water feed pipe (Per Metre) (ACC309/S-SP)		Not Stocked
13	Back Panel		Not Stocked
14	Brass blanking bung (WMB15/B-SP)		Not Stocked
15	John Guest 15mm Push-fit "T" coupling (WMB15/T-SP)		Not Stocked
16	Cold water inlet solenoid valve (SOL12-SP)	INWA16	
17	Brass 1/4" BSP to 15mm push-fit (SRF15-SP)		Not Stocked
18	John Guest 15mm straight push-fit (WMB15/S-SP)		Not Stocked
19	Over-boil safety cut-out (XErn7-SP)		Not Stocked
20	Brass thermal cut-out mount (SRF25-SP)		Not Stocked
21	Complete Tap (WTP500)	INWA501	
22	Grey plastic tap collar (XEN304-SP)		Not Stocked
23	Tap washer-seal (silicone rubber) (XWSH2-SP)		Not Stocked
24	Silicone seat-cup tap washer (TP1001/L-SP)		Not Stocked
25	Tap stem (XTP1053-SP)		Not Stocked
25	Tap Spring (TP1007 /N-SP)		Not Stocked
27	Tap bonnet (XTP1052-SP)		Not Stocked
28	AAFIRST RED Tap handle (XTP1055/LC/RED)		Not Stocked

**AA FIRST is a division of CIRCON LTD: Registered in England 5121722**

**UK HQ:**

Cedar House  
Grange Farm  
Long Lane  
Newbury, RG14 2TF

**T:** +44 (0) 1635 202489  
**E:** enquiries@aafirst.co.uk  
**W:** aafirst.co.uk

**FRENCH HQ:**

**T:** +33 (0) 674 437 445  
**E:** derek@aafirst.eu  
**W:** aafirst.fr  
**W:** aafirst.de

**T:** +33 (0) 670 817 660  
**E:** marike@aafirst.eu  
**W:** aafirst.fr  
**W:** aafirst.de

NO.	DESCRIPTION	CODE	REMARKS
29	Bent tap pin (TP1030-SP)		Not Stocked
30	Upper Tap Assembly	IN1502	
31	3/4" BSP nut, washer & brass tail push-fit (WMB34/A)		Not Stocked
32	Element Thermal Cut Out (set @ 120AC) (XETR5-SP)	IN1511	
33	Plastic front fascia (WMB5/GREY-SP)		Not Stocked
34	Brass Tank Drain Plug (WBA24 7 /C-SP)		Not Stocked
35	Fibre Washer (WBA501-SP)		Not Stocked
36	Inlet Elbow		Not Separately Available
37	SS Baffle Plates		Not Stocked

**AA FIRST is a division of CIRCON LTD: Registered in England 5121722**

**UK HQ:**

Cedar House  
Grange Farm  
Long Lane  
Newbury, RG14 2TF

**T:** +44 (0) 1635 202489  
**E:** enquiries@aafirst.co.uk  
**W:** aafirst.co.uk

**FRENCH HQ:**

**T:** +33 (0) 674 437 445  
**E:** derek@aafirst.eu  
**W:** aafirst.fr  
**T:** +33 (0) 670 817 660  
**E:** marike@aafirst.eu  
**W:** aafirst.fr  
**W:** aafirst.de