

# INSTALLATION INSTRUCTIONS

USE FOR THE SIPNeo3



# CONTENTS

Important Information..... 3

Safety Precautions..... 3

Ne03 Component Chart ..... 4

Installation Steps..... 5

How to Program the System..... 6

Generator Programming Instructions..... 7

Troubleshooting ..... 8

Limited Warranty..... 9

Please note all drawings, pictures, colors and sizes are approximate for illustrative purposes only and may not exactly resemble the end product.

## 0 IMPORTANT INFORMATION

- SIP NE03 is manufactured to function on various plugs, sockets, voltage and plug types. Use appropriate power cords.
- Installation must be performed by a trained technician or experienced professional.
- Inspect the carton and SIP NE03 for evidence of rough handling and concealed damages. If content appears damaged, ask driver or contact the carrier for damage claim form to fill out. Notify shipper immediately.
- Remove components from the shipping carton. Check that all installation parts and hardware are present.
- Make complete inspection of the SIP NE03 system to ensure that:
  - a) There is no physical damage to the system
  - b) All accessories are present
- Intended for indoor use only on water dispensers.
- Use the system on a potable, safe-to-drink, COLD water supply
- Dispenser, water dispenser or compressor are references to bottle and bottleless water coolers

Read Guide to Installation, Operating And Programming, specifications, cautions and warnings before installing and using the system.

## A SAFETY PRECAUTIONS

**WARNING** -To guard against injury, basic safety should be observed including the following: Read all instructions, specifications, cautions, and warnings before installing and using SIP NEOT. Learn the specific details regarding installation and use. Failure to follow them could cause serious injuries and possible property damage.

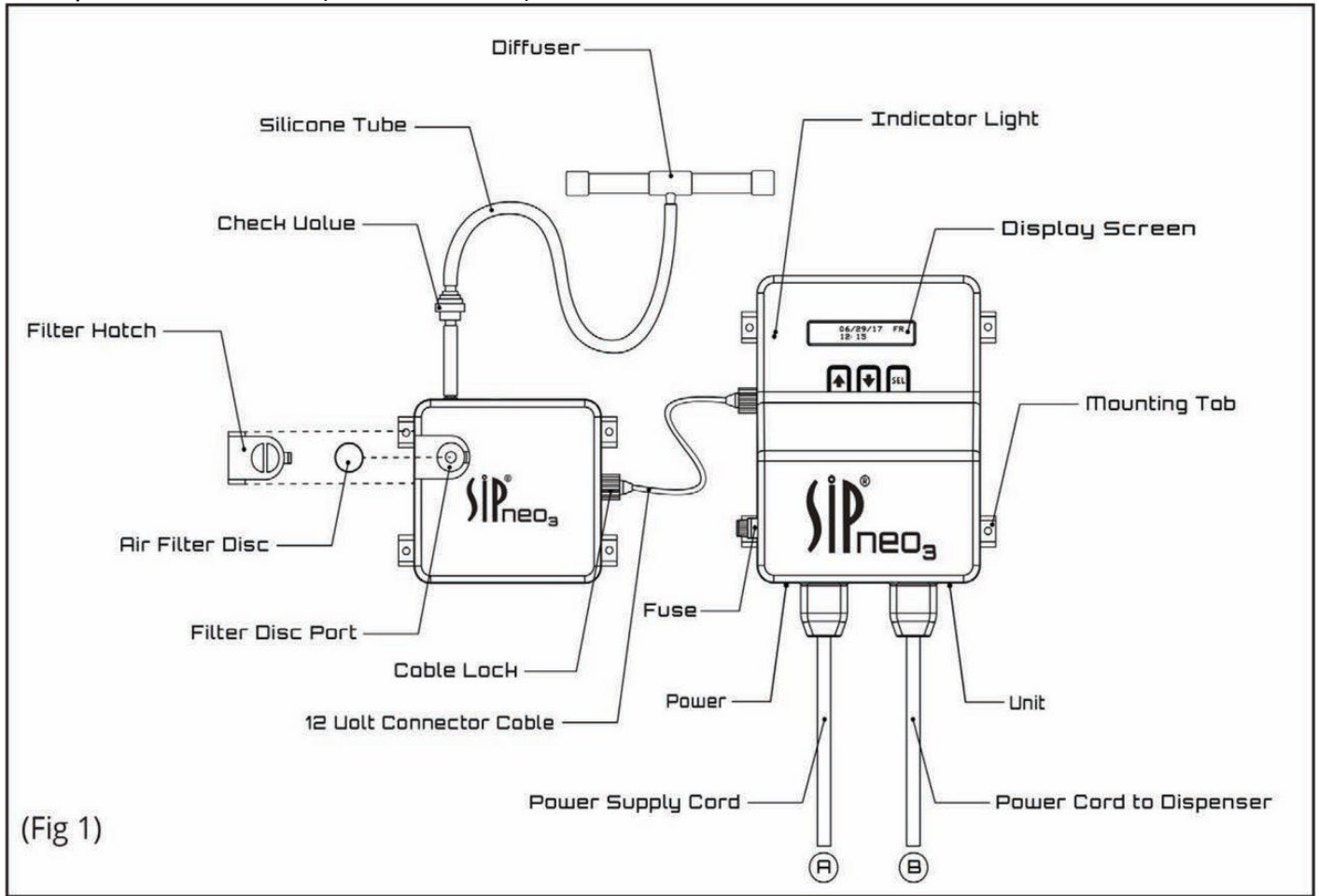
**DANGER** - To avoid possible electrical shock/ unplug dispenser prior to installation of SIP NE03. All power cords and plugs must meet national safety standards. The power supply cord must be plugged into an electrical wall outlet. DO NOT plug into an extension cord. DO NOT stand on wet floor when installing and servicing the water dispenser.

Install check valve on silicone tubing prior to the diffuser to avoid water from reservoir flowing backward causing damage to ozone generating device.

## NE03 COMPONENT CHART

WHERE TO PLUG IN POWER CORDS (FIG 1)

Plug the main power supply cord into the "POWER" receptacle (bottom of the control device system, left side). Plug the short power outlet cord (converter cord) into 'UNIT' receptacle (bottom of the control device system, right side). Plug the water dispenser power cord into the opposite end of the short power outlet cord (converter cord).



Important: All float mechanisms are not identical and the optimal location of the down rod may vary depending on your particular float system.

## INDICATOR LIGHTS ON CONTROL SYSTEM DEVICE

- The indicator lights are to display the status of the system when the SIP NEC)3 is in function. • Red light is ozone indicator and is on when O3 is in operation. When red light is on, sanitization is in progress. Do not dispense or drink water when the red light is on.
- Yellow light is air indicator and is on when the air compressor is in operation.
- Green light indicates O3 treatment has been successfully performed and dispenser has resumed operation. Green Light is also a power indicator which is on when power is on. It is off when power is not connected

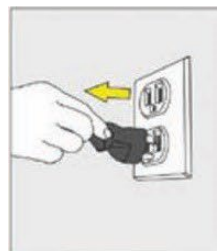
# X INSTALLATION STEPS

## HOW TO INSTALL THE SIP NE03 AUTOMATIC OZONE SANITISING SYSTEM.

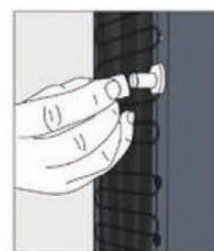
SIP NE03 is designed to be used on all brands of Bottled and tank fed POU (Bottle-less) Water Coolers. The system can be installed inside the body of the Cooler or the back of the Cooler using zip ties.

### STEPS TO INSTALLING THE SIP NE03 ON BOTTLED OR POU COOLERS

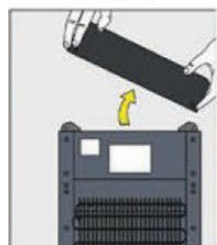
1. Turn Power to the unit off (Image 1) \*
2. Turn the mains supply off on POU Coolers or remove the Water Bottle from the Bottled Water Cooler \*
3. Drain the Water from the units water reservoir using its drain line or drain tap (Image 2) \*
4. Remove the Top Panel from the Water Cooler (Image 3) \*
5. Remove the Water Reservoir tank lid and the baffle inside the tank (Image 4)
6. Remove insulation surrounding the water reservoir (Image 5)
7. Use a 5/16" drill or use a hole punch to cut a hole in the metal reservoir above the water level but below the tank lid seal (Image 6)
8. Refit the insulation material and make a hole in it, to line up with the hole in the water reservoir tank (Image 7)
9. Push the 1/4" soft tubing through the hole in the side of the tank and connect the end to the Diffuser (Images 8 & 9)
10. Guide the soft tubing (down rod) alongside the wall of the reservoir tank until the Diffuser comes to rest at the bottom of the tank.
11. Re-fit the baffle. You may have to cut a small groove in the baffle top to accommodate the soft tubing.
12. Use a sealing grommet over the 1/4" soft tubing to fit snugly through the tank hole.
13. Re-fit the top panel of the Water Cooler
14. Connect the other end of the 1/4" soft tubing to the SIP NE03 Check Valve (Image 10)
15. Connect both SIP NE03 housings with the included 12 volt connector cable (Image 11)
16. Connect mains power to the SIP NE03 and from there to the Cooler.
17. Secure SIP NE03 to the panel, condenser or the back wall in such a way that the Display Screen is easily accessible/visible
18. Re-install the water supply to the unit



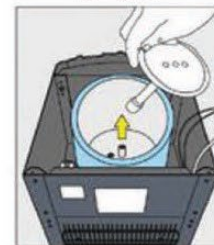
(Image 1)



(Image 2)



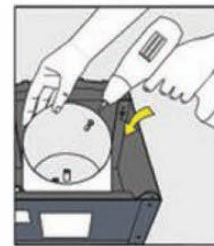
(Image 3)



(Image 4)



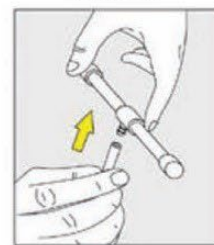
(Image 5)



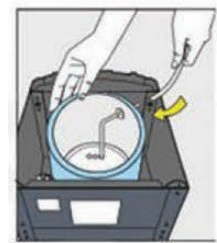
(Image 6)



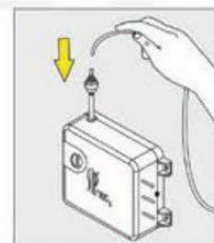
(Image 7)



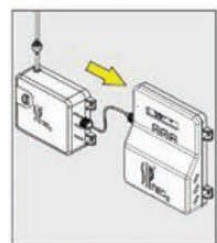
(Image 8)



(Image 9)



(Image 10)



(Image 11)

19. You now have to ensure that the SIP NE03 Programmer controls the sanitising cycle and in case you have used the power saving Sleep Mode - that the Sleep Mode operates properly.

\*Please note steps 1-4 Only apply to retrofitted SIP'S Where the cooler has been in use.

Copyright © 2017

## HOW TO PROGRAM THE SYSTEM

### SIP NE03 Display Window

The screen is an LCD backlight for clear data display. It displays data during programming and when stationary, when on and off, and when programming operating time for the Ozone generator, air pump, and water dispenser compressor. During normal operation this screen shows date, day of the week and time of day using a 24-hour clock mode.

### The Function Buttons

There are three buttons below the LCD display window. They are used for:

- Up and Down (arrows). Press simultaneously to enter programming.
- Up (arrow). Allows cycling through each screen and to change input.
- SEC. Allows change of input, saves, and moves to next input.

Your SIP NEO? system has been programmed at the factory. Only the local time, date and day of week need to be adjusted to make your SIP NE03 set-up complete. Follow the instructions to adjust these settings.

### Function Settings

The following symbols used in the SIP NE03 LCD display panel indicates:

03 Ozone Generator - Air Pump co  
Dispenser Compressor

When 03 is displayed then you are programming the ozone operation. Likewise, the air pump and compressor/water dispenser symbols indicate that you are programming the operation of these functions.

When 03 is programmed, the AP is automatically programmed to turn on at the same time. It stays on for 10 minutes after 03 turns off. This allows the ozone to be dissipated and to leave no residual ozone in the reservoir after the program is completed. The compressor display allows you to control the operation of the water dispenser. Therefore, the cooler can be shut down during periods of inactivity to save energy. In addition, AP can be programmed to turn on independently at two separate times.

### How to Enter Programming Mode

Press both UP & DOWN arrows simultaneously and hold to unlock the unit to allow programming. Press UP key to scroll through the five programmable fields:

- Use the SEL key to edit the selected functions.
- 03 (Ozone Generator)/air pump program and cycle time. When in programming mode Press STL to enter 03 programming screen.
- AP (Air Pump) programming and cycle time.
- CO (Compressor) programming and cycle time.

The Compressor Screen Has 5 Programmable Fields:

- Start day of the Week
- End day of the week
- Start daily on time
- End daily off time
- On all the time

Copyright © 2017

These fields are programmed using the same methods — UP key to increment value and SEL key to accept the value.

## Generator Programming Instructions

### 03, AP, CO and how to set date, day, and local time

During normal operation, the date and time are displayed.



To enter the Device Programming mode press the UP and DOWN keys together for about 3 seconds. The following screen is displayed.



Once in Device Programming Mode press UP to cycle through each screen. There are 5 programming screens. Any one of the screens can be selected by pressing SEL.

#### Program Select (UP key)

<u>S</u> et 23 Program 1
SEC- <u>e</u> dit UP-skip
<u>s</u> et 03 Program e
SEC- <u>e</u> dit UP-skip
Set Compressor
SEC-edit UP-skip
Set Rir Pump
SEC-edit UP-skip

#### Edit Mode

SEL key	03 1 ON 04:00
	1 OUR mins
SEL key	ON æ0:00
	OUR mins
SEL key	CMP MO - <u>FR</u> an. • 00 -
SEL key	e0:aa
	RPI 1B:æs earn
	ls:æs urn



Set Date/Time

## SEC-edit UP-skip

SEL  
key

06/23/17 FR  
11:30

Once in Edit Mode, a blinking cursor will appear on the first input of that screen (use previously defined procedure)

Copyright@ 2017

7



## e TROUBLESHOOTING

- There is no power to dispenser.
  - Check to make sure power supply cord is plugged into the electrical wall outlet.
  - Check that power supply cord is plugged into the three-pin "power" socket on the bottom side of control system device.
- Check to make sure the male end of the converter cord is plugged into the female socket in the "UNIT" on the bottom side of the control system device.
  - Check to make sure the dispenser power cord is plugged into the female end of the converter cord.
  - If no indicator light and/or display is on, check and replace the 10-amp fuse. It is located on the left side of the control system device.
- There is no production or low production of O<sub>3</sub>.
  - Check all cable connections to make sure all cords are plugged in properly.
- Check the programming to make sure ozone setting is set correctly.
  - Check and replace the filter disc.
  - Verify a check valve is on the silicon tubing after ozone generator device. • Check and/or replace diffuser.

Caution: Make sure to unplug the main power supply cord from electrical wall outlet prior to accessing circuit boards and fuses.

## @ANNUAL MAINTENANCE

- Check and replace the filter disc.
- Check and replace check valve, if appears damaged. • Check and replace diffuser, if appears damaged.

## LIMITED WARRANTY

SIP NE03 IS WARRANTIED AGAINST DEFECTS IN MATERIALS AND WORKMANSHIP, UNDER NORMAL USE AND OPERATION, FOR A PERIOD OF ONE YEAR FROM THE DATE OF ORIGINAL PURCHASE ("WARRANT( PERIOD)').

IF A DEFECT ARISES AND A VALID CLAIM IS RECEIVED WITHIN THE WARRANTY PERIOD, AT MANUFACTURER'S

DISCRETION ONE OF THE FOLLOWING WILL BE IMPLEMENTED: 1 ) REPAIRED AT NO CHARGE USING NEW OR REFURBISHED REPLACEMENT PARTS, 2) EXCHANGED WITH A PRODUCT THAT IS NEW OR WHICH HAS BEEN MANUFACTURED FROM NEW OR SERVICEABLE USED PARTS AND IS AT LEAST FUNCTIONALLY EQUIVALENT TO THE ORIGINAL PRODUCT, 3) CREDIT GIVEN FOR THE DEFECTIVE PRODUCT, OR 4) REPLACEMENT PARTS SENT TO PURCHASER TO REPAIR THE PRODUCT.

REPLACEMENT PRODUCTS/PARTS ARE WARRANTIED AGAINST DEFECTS IN MATERIALS AND WORKMANSHIP FROM THE DATE OF THE REPLACEMENT OR REPAIR FOR THIRTY (30) DAYS OR FOR THE REMAINING PORTION OF THE ORIGINAL PRODUCT'S WARRANTY, WHICHEVER PROVIDES LONGER COVERAGE. WHEN A PRODUCT OR PART IS EXCHANGED, ANY REPLACEMENT ITEM BECOMES PURCHASER'S PROPERTY AND THE REPLACED ITEM BECOMES PROPERTY OF MANUFACTURER. WHEN A REFUND IS GIVEN, PRODUCT BECOMES MANUFACTURER'S PROPERTY.

EXCLUSIONS AND LIMITATIONS - THIS LIMITED WARRANTY APPLIES ONLY TO PRODUCTS MANUFACTURED BY OR FOR SIP THAT CAN BE IDENTIFIED BY THE TRADEMARK, TRADE NAME, OR LOGO AFFIXED TO IT. THIS LIMITED WARRANTY DOES NOT APPLY TO ANY NON-SIP PRODUCT.

THIS WARRANTY DOES NOT APPLY: (A) TO DAMAGE CAUSED BY ACCIDENT, ABUSE, MISUSE OR MISAPPLICATION; (B) TO DAMAGE CAUSED BY INSTALLATION NOT IN ACCORDANCE WITH THE SIP INSTALLATION MANUAL; (C) TO A PRODUCT OR A PART THAT HAS BEEN MODIFIED WITHOUT THE WRITTEN PERMISSION OF SIP; OR (D) IF ANY SIP SERIAL NUMBER HAS BEEN REMOVED OR DEFACED.

TO THE MAXIMUM EXTENT PERMITTED BY LAW, THIS WARRANTY AND THE REMEDIES SET FORTH ABOVE ARE EXCLUSIVE AND IN LIEU OF ALL OTHER WARRANTIES, REMEDIES AND CONDITIONS, WHETHER ORAL OR WRITTEN, EXPRESS, IMPLIED OR STATUTORY. SIP SPECIFICALLY DISCLAIMS ANY AND ALL IMPLIED WARRANTIES, INCLUDING, WITHOUT LIMITATION, WARRANTIES OF MERCHANTABILITY, NON-INFRINGEMENT OF A THIRD PARTY'S RIGHTS AND FITNESS FOR A PARTICULAR PURPOSE. IF SIP CANNOT LAWFULLY DISCLAIM

OR EXCLUDE IMPLIED WARRANTIES UNDER APPLICABLE LAW, THEN TO THE EXTENT POSSIBLE ANY CLAIMS UNDER SUCH IMPLIED WARRANTIES SHALL EXPIRE ON EXPIRATION OF THE WARRANTY PERIOD. EXCEPT FOR THE WARRANTY PROVIDED HEREIN, THE PRODUCT IS PROVIDED "AS IS." NO SIP RESELLER OR AGENT IS AUTHORIZED TO MAKE ANY MODIFICATION, EXTENSION, OR ADDITION TO THIS WARRANTY WITHOUT THE EXPRESSED WRITTEN CONSENT OF SIP.

TO THE MAXIMUM EXTENT PERMITTED BY LAW, SIP IS NOT RESPONSIBLE FOR DIRECT, INDIRECT, SPECIAL, INCIDENTAL OR CONSEQUENTIAL DAMAGES (INCLUDING BUT NOT LIMITED TO LOSS OF USE OR LOST PROFITS) RESULTING FROM ANY BREACH OF WARRANTY OR CONDITION, OR UNDER ANY OTHER LEGAL THEORY. PURCHASER'S EXCLUSIVE REMEDY AND SIP'S SOLE LIABILITY ON ANY CLAIM, WHETHER IN TORT, CONTRACT, WARRANTY OR OTHERWISE, SHALL BE LIMITED TO THE AMOUNT PAID FOR PURCHASE OF THE PRODUCT FROM WHICH THE CLAIM AROSE AND IN NO EVENT SHALL SIP BE LIABLE FOR INDEMNIFICATION OF PURCHASER ON ACCOUNT OF ANY CLAIM ASSERTED AGAINST PURCHASER OR FOR ANY OTHER FURTHER DAMAGES WHATSOEVER, WHETHER DIRECT OR INDIRECT.

