

# Catalogue

Coolers

Fountains

Boilers

Taps

Accessories



## Contents

Water Coolers	4-5
Water Fountains	6
Water Boilers	7
Ezytap Range	8-9
Droople	10
Water Filtration	11
Essential Accessories	12
Cosmetal Coolers	13
Cosmetal Dispensing Taps	14
Cosmetal Fountains & Chillers	15

## Quality – Reliability – Integrity

Dear Customer,

We are pleased to introduce our 2026 Catalogue. It shows on Page three our “Signature Collection”, our products with outstanding performance and great costs/benefits. We are proud to offer innovative and reliable products designed to meet your needs and help you achieve your goals.

Thank you for your continued trust and partnership. Here’s to a successful future together.

**Hans Krohn**  
CEO

**Peter Benson**  
MD





**ArcticChill 108** pg 04  
Sturdy Build. Reliable Performance.



**PowerSmart 3** pg 07  
Reduce Costs & Protect The Environment.



**Water Filters** pg 11  
Reusable Housing & Recyclable Candles.



**Niagara** pg 05  
Large Chilled Output. Ideal for HORECA.



**ProStream** pg 14  
15ltrs/h Chilled & Sparkling. 55ltrs/h Hot.



**Droople** pg 10  
Smart Management & Maintenance.

# Our Signature Collection

Quality – Reliability – Integrity

Premium products. loved by **all**.



### ArcticChill 108

Hassle-free operation meets unbeatable reliability. Featuring an increased dispense height to suit every user, this cooler is also available in a tabletop model

**Weight** 23kg  
**Chilling System** Direct Chill

**Dimensions HxWxD (mm)**  
1140x340x340 (FS)  
445x340x340 (TT)



35ltrs/h



### ArcticChill 109

High-capacity output with intuitive functionality. Direct chill cooler dispenses both ambient and chilled water. Available in a tabletop model, perfect for all customer spaces

**Weight** 23kg  
**Chilling System** Direct Chill

**Dimensions HxWxD (mm)**  
1140x340x340 (FS)  
445x340x340 (TT)



∞



35ltrs/h



### ArcticStar 55

Versatile, tank-fed and energy smart. A powerful cooler that features hot water boost functionality and eco-sensor technology. Floor standing and tabletop models available

**Weight** 20 - 26kg  
**Chilling System** Tank Fed

**Dimensions HxWxD (mm)**  
1140x340x350 (POU FS)  
460x340x350 (POU TT)  
1160x340x350 (Bottled FS)  
480x340x350 (Bottled TT)



∞



20ltrs/h



9ltrs/h



### 3300X

Reliable hydration made easy. Traditional and cost-effective, this cooler continues to impress and deliver consistently. Floor standing and tabletop models available, the perfect option

**Weight** 20 - 26kg  
**Chilling System** Tank Fed

**Dimensions HxWxD (mm)**  
1140x340x350 (POU FS)  
460x340x350 (POU TT)  
1160x340x350 (Bottled FS)  
480x340x350 (Bottled TT)



∞



20ltrs/h



5ltrs/h



### Aquapoint 60B

Contemporary, budget friendly and reliable. This standout, performance-focused cooler combines style and dependability, making it perfect for all customer spaces

**Weight** 15kg  
**Chilling System** Tank Fed

**Dimensions HxWxD (mm)**  
1032x326x353 (POU)  
1032x326x353 (Bottled)



∞



20ltrs/h



5ltrs/h

# Our Range of Coolers

Easy to **install**.  
Easy to **maintain**.  
Easy to **enjoy**.





### Jazz

Classic, no-nonsense hydration that you can rely on. Simple to operate and built for durability, it's a smart choice if you value practicality and efficiency.

**Weight** 20kg  
**Chilling System** Tank Fed

**Dimensions HxWxD (mm)**  
1015x340x340 (POU)  
1030x340x340 (Bottled)



### Aquality

Designed for consistent chilling performance, this ice bank cooler is a premium alternative from Cosmetal. Stylish design and sturdy build that can dispense sparkling water.

**Weight** 20kg  
**Chilling System** Ice Bank

**Dimensions HxWxD (mm)**  
1180x345x337

\*Bottled model has 25.5cm dispense height

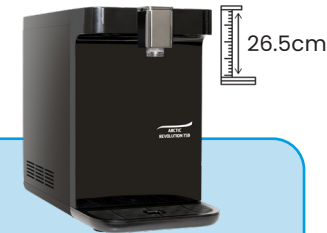


### Niagara

Unbeatable performance that can keep up with the busiest customer environments. Featuring a sturdy metallic build, this high performer is also available in tabletop.

**Weight** 51 - 59kg  
**Chilling System** Ice Bank

**Dimensions HxWxD (mm)**  
1480x480x405 (AC FS)  
1480x480x560 (WG FS)  
510x482x499 (TT)

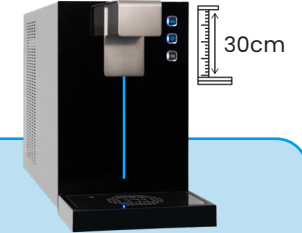
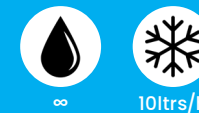


### ArcticRevolution 75B

Small and mighty. This direct chill cooler uses its narrow footprint to neatly fit onto any work top space. Simple to use and easy to install, a staple for any product range of coolers.

**Weight** 13kg  
**Chilling System** Direct Chill

**Dimensions HxWxD (mm)**  
373x240x488



### Hi Class

Modern and sleek ice bank cooler. Compact design that doesn't compromise on performance. A futuristic alternative that is guaranteed to be a success for everyone.

**Weight** 23kg  
**Chilling System** Ice Bank

**Dimensions HxWxD (mm)**  
407x262x552



Our coolers are designed to make life easy for you and your customers. Reliable, hassle-free, and built to last, our coolers reduce callouts while boosting customer satisfaction. With sleek designs, modern features, and options to suit every workplace, they deliver the style and performance you expect, and the value and peace of mind you need. In short, they don't just hydrate, they help businesses thrive.

Check out our range of essential accessories and upgrades to get the most out of our products and unlock your businesses' sales potential.



### WFT6

Built from high-quality stainless steel, this fountain is sturdy and practical. Offers dual dispense with a swan neck tap and a drinking bubbler

**Weight** 25kg  
**Installation** Indoor

**Dimensions HxWxD (mm)**  
1015x305x305



26ltrs/h



### River

Sleek and efficient, the River features both a bubbler and swan neck tap. Built to last, the stainless steel exterior is durable and easy to maintain

**Weight** 25kg  
**Installation** Indoor

**Dimensions HxWxD (mm)**  
960x330x330



30ltrs/h



### River Up

The River Up gives you all the same dispensing options and high performance as the River, but in a compact, wall-mounted option. Ideal for areas with limited floor space

**Weight** 28kg  
**Installation** Indoor

**Dimensions HxWxD (mm)**  
505x432x360



30ltrs/h



### Font 50

Our bottle filler is the ideal solution for schools, gyms and public spaces. Featuring a large dispense height, paired with an eco-conscious plastic bottle savings calculator

**Weight** 7.75kg  
**Installation** Outdoor\*

**Dimensions HxWxD (mm)**  
634x435x125

\*Suitable for indoor or covered outdoor installation.



∞



### UC800M

Chilled undersink unit with the option to purchase with a chrome swan neck tap. Needs installation with an approx. 50mm clearance around each side for sufficient ventilation

**Weight** 12.8kg  
**Installation** Indoor

**Dimensions HxWxD (mm)**  
260x290x400



11.5ltrs/h

# Explore Our Fountains & Boilers



### PowerSmart 3

A smart technology boiler that features a built in eco sensor that automatically enters sleep mode when nearby lights are turned off. The small footprint makes it ideal for tight spaces

**Weight** 9.8kg **Cups per Hour** 96

**Dimensions HxWxD (mm)**  
436x215x345



17ltrs/h



### 1000C

The 1000C is a well-insulated machine which is important to keep heat in and costs low. Features a self diagnostic system and long life elements

**Weight** 9.7kg **Cups per Hour** 186

**Dimensions HxWxD (mm)**  
440x218x465



31ltrs/h



### 1200L

Sturdy and reliable, this stainless steel boiler also features an integrated drip tray and LED temperature display. It also includes high quality insulation to combat heat loss

**Weight** 12kg **Cups per Hour** 96

**Dimensions HxWxD (mm)**  
560x260x260



17ltrs/h



### 1500

Our top of the range boiler features a superior instant draw off and self diagnostic system. Built for front of house environments and compatible with our touch free adaptor

**Weight** 12.1kg **Cups per Hour** 186

**Dimensions HxWxD (mm)**  
610x243x510



31ltrs/h



### WA5

Our wall mounted boiler, the WA5 has a variable dispense height. It is also compatible with our touch free adaptor and features a polished stainless steel body

**Weight** 7.8kg **Cups per Hour** 186

**Dimensions HxWxD (mm)**  
438x290x207



31ltrs/h



Designed with strength, efficiency, and sustainability in mind, our fountains and boilers deliver exceptional reliability and long term value. From busy offices to hospitality spaces, they make hydration and hot water service simple, safe, and seamless. We're always evolving our range, looking for new technologies to enhance machine performance and reduce environmental impact.

Smart features and performance you can trust. Our equipment supports productivity, sustainability, and customer satisfaction.



### Ezytap 75

Sleek electronic tap paired with a compact undersink boiler, delivering hot & ambient water with ease. Add the UC800M chiller to switch ambient to chilled. A simple and flexible choice for any site

**Undersink Units**  
4ltr Boiler

**Dimensions HxWxD (mm)**  
222x42x160 (Tap)  
330x220x350 (Boiler)



### Ezytap 75T

Tall electronic tap with the compact undersink boiler, dispensing hot & ambient water. Efficient, versatile, and ideal for any rental site

**Undersink Units**  
4ltr Boiler

**Dimensions HxWxD (mm)**  
285x40x160 (Tap)  
330x220x350 (Boiler)



### Ezytap 85

Short tap with a larger, output capacity undersink boiler for faster, high-volume hot & ambient water. Pair with the UC800M chiller for chilled water dispensing. Compact, efficient, and built to handle any site

**Undersink Units**  
Pumped 8ltr Boiler

**Dimensions HxWxD (mm)**  
222x42x160 (Tap)  
400x230x330 (Boiler)



### Ezytap 85T

The ultimate integrated tap system. Taller tap design with the high-capacity undersink boiler for hot & ambient water. Add the UC800M chiller for chilled water dispensing. Flexible, powerful, and reliable

**Undersink Units**  
Pumped 8ltr Boiler

**Dimensions HxWxD (mm)**  
285x40x160 (Tap)  
400x230x330 (Boiler)



### Ezytap 7800

Shorter tap design with 4ltr boiler and UC800M chiller. A compact but powerful system built for all to enjoy. Drip tray is not included and UC800M will be added separately to Ezytap 75 when ordering

**Undersink Units**  
4ltr Boiler & UC800M

**Dimensions HxWxD (mm)**  
222x42x160 (Tap)  
330x220x350 (Boiler)  
260x290x400 (Chiller)



# Integrated Ezytap Systems







24cm

### Ezytap 7800T

Larger tap design with 4ltr boiler and UC800M chiller. A bottle-filling focused system built to be versatile. Drip tray is not included and UC800M will be added separately to EzyT75T when ordering

**Undersink Units**  
4ltr Boiler & UC800M

**Dimensions HxWxD (mm)**  
285x40x160 (Tap)  
330x220x350 (Boiler)  
260x290x400 (Chiller)

 11.5ltrs/h
  14ltrs/h



18.5cm


### Ezytap 8800

Shorter tap design with pumped 8ltr boiler and UC800M chiller. A high-output system built for busy spaces. Drip tray is not included & UC800M will be added separately to EzyT85 orders

**Undersink Units**  
Pumped 8ltr Boiler & UC800M

**Dimensions HxWxD (mm)**  
222x42x160 (Tap)  
400x230x330 (Boiler)  
260x290x400 (Chiller)

 11.5ltrs/h
  28ltrs/h





24cm

### Ezytap 8800T

Larger tap design with pumped 8ltr boiler and UC800M chiller. Our top spec model that's guaranteed to impress. Drip tray is not included & UC800M will be added separately to EzyT85T orders

**Undersink Units**  
Pumped 8ltr Boiler & UC800M

**Dimensions HxWxD (mm)**  
285x40x160 (Tap)  
400x230x330 (Boiler)  
260x290x400 (Chiller)

 11.5ltrs/h
  28ltrs/h



24cm

### Ezytap AC800

Brings powerful ambient & chilled water delivery together in one integrated system. Supported by our UC800M undersink chiller, this tap set-up provides consistent output all day long

**Undersink Units**  
UC800M Chiller

**Dimensions HxWxD (mm)**  
270x39x198 (Tap)  
260x290x400 (Chiller)

 ∞
  11.5ltrs/h



Our top selling, high-performance taps designed to elevate any space. Ezytaps combine sleek electronic dispensing with an under-sink boiler for instant hot or ambient drinks. Want chilled too? Add the UC800M undersink chiller for a hot-and-cold system your customers will love. Adding the chiller makes the 7800(T) & 8800(T) models. Reliable, stylish, and built to impress.

**Save money.  
Improve service.  
Reduce CO<sub>2</sub> impact.**



# Droople **Exclusively from AA First**

Droople is an intelligent monitoring solution that connects your water dispensing equipment to the Cloud. This allows you to monitor a range of metrics in real time, giving you the ability to respond promptly to issues, save money on operational costs and get ahead of your competition.

## How does it work?



### Measure

Fitted discreetly to your water equipment, they are installed on water lines after the filter. Able to measure one of the below metrics, they provide real-time data without disruption.



### Transfer

The data collected is wirelessly transmitted from the iLink devices. This is either directly to the Droople platform or via a separate gateway.



### Analyse

All of your data is viewable in Droople's cloud platform. Access real-time dashboards, receive automated alerts and track performance metrics.

## What can be measured?



Flow Rate



Temperature



Conductivity



CO<sub>2</sub> Pressure



Water Pressure

**Quality – Reliability – Integrity**

Our range of water filters and installation kits ensures pure, great-tasting water and reliable dispensing performance. Complementing our filters, our installation kits provide a complete, ready-to-fit solution with rails, valves and fittings. Together, they protect your equipment, enhance water quality, reduce maintenance costs and keep your customers refreshed with every glass.

Our three filtration tiers let you choose the level of protection that fits the needs of you and your customers. Our range covers everything from essential filtration to advanced protection for consistently crisp results. Whatever your choice, each tier ensures the perfect blend of purity, performance and reliability.



### **FILTERXL**

Bronze filtration

One-way filter housing with a sealed carbon block candle. Designed to remove chlorine impurities from mains water. This reliable solution delivers an effective first stage of filtration, providing a solid foundation for any water dispenser setup.



### **FILTCARHOU**

Gold filtration

Carbon block candle with reusable housing. Delivers the same high level of protection as our Bronze-tier Filter XL, with the added benefit of long term cost savings. The durable and reusable housing means that after installation, only the filter candle needs replacing, making maintenance more economical and environmentally friendly.



### **FILTCARHOUNANO**

Platinum filtration

High-pharma rated Nanofilter candle with reusable housing. This set up removes 99.9% of bacteria, virus' and other contaminants. This is the ultimate filter set up that offers unbeatable protection and long-term savings for you and your customers. The reusable filter housing is both cost-effective and environmentally responsible, significantly reducing plastic waste with every replacement.



### **FILTHOUN**



### **PRAILKIT**



### **PFRAILKITNANO**



### **FILTC150**



### **PFRAILKIT**



### **BFRAILKIT**



### **PFRAILKITXL**



### **BPFRAILKIT**

# **Expert Filtration**

*Quality – Reliability – Integrity*



### Sip Neo3

Automatic sanitising.

Protects tank-fed coolers, cuts costs, and improves operational efficiency. Sip uses micro-bubbles of ozone to sanitise water trails, night after night. Programmable sleep mode function slashes electricity usage by up to 60% and eliminates frequent sanitising visits. A smart upgrade if you value safety and efficiency.



### Klaran UVC

Water purification.

Advanced hygiene protection for your water dispensing systems. UVC LED technology tuned to the optimum germicidal range (26-270nm), delivering reliable and maintenance free disinfection. Built with high quality components to increase effectiveness and lifespan, Klaran is truly a fit-and-forget upgrade.



### 3ltr Overflow Kit

3ltr capacity overflow kit. Features an alarm and easy drainage tap.



### 10ltr Overflow Kit

10ltr capacity overflow kit. Features an alarm.



### Mains Waste Kit

Connects the drip tray to mains waste. Only available pre-installed.



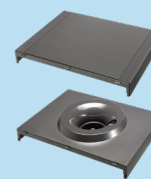
### Pumped Waste Kit

Pumps water from the drip tray to mains waste.



### Gas & Regulators

600g gas cylinders and pressure regulators for sparkling dispensing.



### Conversion Kits

Bottled to POU conversion kits. Available for 3300X, Jazz, 60B, and ArcticStar 55.



### Cowlings & Brackets

Metal wall-mounts to keep machines secure and safe from tampering.



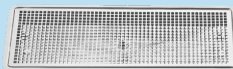
### Cup Holders

External magnetic and screw-type cup dispensers. Suitable for all AA coolers.



### Drip Tray VR-1

Stainless steel drip tray without mains drainage.



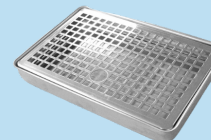
### Drip Tray VR-12

Stainless steel drip tray with mains drainage.



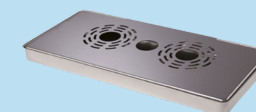
### Drip Tray VR-G7

Stainless steel drip tray with mains drainage for the Pro Stream tap.



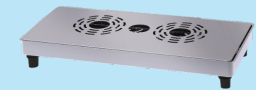
### Drip Tray VR-IR

Counter top stainless steel drip tray without mains drainage.



### Drip Tray VR-IS

Stainless steel drip tray without mains drainage, for Niagara Top.



### Drip Tray VR-IS2

Stainless steel drip tray with mains drainage, for Niagara Top.

# Our Essential Accessories







### AQUALITY

Designed for consistent chilling performance, this ice bank cooler is a premium alternative from Cosmetal. Stylish design and sturdy build that can dispense sparkling water

**Weight** 20kg  
**Chilling System** Ice Bank

**Dimensions HxWxD (mm)**  
1180x345x337

\*Bottled model has 25.5cm dispense height



### Niagara

Unbeatable performance that can keep up with the busiest customer environments. Featuring a sturdy metallic build, this high performer is also available in tabletop

**Weight** 5l - 59kg  
**Chilling System** Ice Bank

**Dimensions HxWxD (mm)**  
1480x480x405 (AC FS)  
1480x480x560 (WG FS)  
510x482x499 (TT)

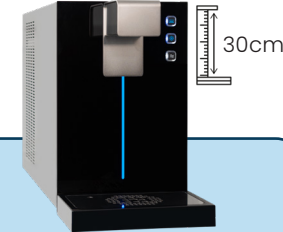


### Niagara Top

Classic, no-nonsense hydration that you can rely on. Simple to operate and built for durability, it's a smart choice if you value practicality and efficiency. A cooler you can trust

**Weight** 54kg  
**Chilling System** Ice Bank

**Dimensions HxWxD (mm)**  
510x482x490 (AC)  
510x482x490 (WG)



### Hi Class

Modern and sleek ice bank cooler. Compact design that doesn't compromise on performance. A futuristic alternative that is guaranteed to be a success for everyone

**Weight** 23kg  
**Chilling System** Ice Bank

**Dimensions HxWxD (mm)**  
407x262x552



FILTBCM



PFRAILKITCOS



CEAQOVERFLOW



CEBASEHI30

# Premium Cosmetal Coolers



23cm

### ProStream

Futuristic and stylish chrome plated tap system. Comes with an undersink boiler and chiller to offer a complete all rounded hydration set up

**Dispensing Controls**  
Electronic (3-way)

**Dimensions HxWxD (mm)**  
255x131x212 (tap)  
407x242x315 (boiler)  
407x260x300 (Chiller)



15ltrs/h



15ltrs/h



55ltrs/h



33.5cm

### Drink Tower

Designed for easy operation in high-output spaces. Purchase this tap with an undersink chiller to create the ultimate integrated tap system for your customers

**Dispensing Controls**  
Push Button (3-way)

**Dimensions HxWxD (mm)**  
570x176x270 (tap)



∞



15ltrs/h - 120ltrs/h



15ltrs/h - 120ltrs/h



23.5cm

### G400

Classic and sleek chrome plated tap with electronic control. Ideal for customers with limited space thanks to its slim design. Perfectly combines with our chillers and drip trays

**Dispensing Controls**  
Push Button (3-way)

**Dimensions HxWxD (mm)**  
360x184xØ42



∞



15ltrs/h - 120ltrs/h



15ltrs/h - 120ltrs/h



27.5cm

### Cobra 2

Popular in bar and restaurant spaces thanks to its straight-forward lever operation and reliable performance. A hassle free tap suitable for all chillers and drip trays

**Dispensing Controls**  
Manual Lever (2-way)

**Dimensions HxWxD (mm)**  
438x290x207



∞



15ltrs/h - 120ltrs/h



15ltrs/h - 120ltrs/h



30cm

### G72

Simple and easy-to-use, the G72 is designed for any customer. Its impressive dispense height complements our undersink units to create a powerful tap set up

**Dispensing Controls**  
Manual Lever (2-way)

**Dimensions HxWxD (mm)**  
345x100xØ90



∞



15ltrs/h - 120ltrs/h



15ltrs/h - 120ltrs/h

# Dispensing Taps

Our range of stylish, high-performance dispensing taps deliver the perfect hydration solution when paired with our undersink units. Together, they form a seamless, integrated tap system that fits effortlessly into any space. The undersink unit determines both the output capacity and water type, so you can create a tailored refreshment experience that's as functional as it is refined.



### River

Sleek and efficient, the River features both a bubbler and swan neck tap. Built to last, the stainless steel exterior is durable and easy to maintain

**Weight** 28kg **Installation** Indoor

**Dimensions HxWxD (mm)**  
960x330x330



30ltrs/h



### River Up

The River Up gives you all the same dispensing options and high performance as the River, but in a compact, wall-mounted option. Ideal for areas with limited floor space

**Weight** 28kg **Installation** Indoor

**Dimensions HxWxD (mm)**  
505x432x360



30ltrs/h



### H2OMY IN

Compact undersink chiller designed for small spaces. Dispenses ambient and chilled water or chilled and sparkling. The perfect companion for any dispensing tap

**Weight** 15kg **Chilling System** Ice Bank

**Dimensions HxWxD (mm)**  
407x260x235 (AC)  
407x260x300 (AC WG)



∞



15ltrs/h



15ltrs/h



### J-Class IN

Consistent performance chiller with impressive output performance. Dispenses ambient and chilled or chilled and sparkling, adapting to suit any customers needs

**Weight** 21kg **Chilling System** Ice Bank

**Dimensions HxWxD (mm)**  
400x255x400



∞



45ltrs/h



45ltrs/h



### Niagara IN

Ultimate performance, heavy duty chiller. This powerful performer dispenses ambient and chilled or chilled and sparkling water in large volumes

**Weight** 46kg **Chilling System** Ice Bank

**Dimensions HxWxD (mm)**  
500x350x480



∞



120ltrs/h



120ltrs/h

# Fountains & Undersink Chillers



+44 (0) 1635 202489

[enquiries@aafirst.co.uk](mailto:enquiries@aafirst.co.uk)

[www.aafirst.co.uk](http://www.aafirst.co.uk)

AA First, Cedar House, Grange Farm, Long Lane, Newbury, RG14 2TF