



WFT6/WFP9T WATER FOUNTAIN
R290 GAS PARTS LIST

No	Description	Code	Remarks
1	EXTERIOR CASING	CA02S	
2	AA FIRST LOGO	CA01	
8	COMPRESSOR GROUP NBC22RA	CA08R	With R290 Gas
9	CHARGE TUBE	CA09R	With R290 Gas
12	CABLE IEC+CABLE TERM ST S7	CA12R	With R290 Gas
15	INSULATED TANK GROUP S.T,4,6	CA15R	With R290 Gas
17	SWAN NECK WFT6 PUSH BUTTON	CA14	
17a	SWAN NECK FOR THE WFP9T	CA14A	FOR WFP9T
18	DRIP TRAY WFT6	CA11S	
18a	DRIP TRAY WFP9T	CA11A	FOR WFP9T
19	BUBBLER	CA10	
22	COLD WATER OUTLET FOR WFP9T	CA22R	With R290 Gas
23	PRESSURE RELIEF VALVE	CA59	
27	DIGITAL THERMOSTAT FOR WFP9T	CA27R	With R290 Gas
28	REAR PROTECTION GRID	CA28R	With R290 Gas
29	MAIN SOCKET	CA30	
32	FAN MOTOR	CA46	
33	CONDENSOR	CA48	
34	FILTER/DRYER	CA49	
41	ADJUSTABLE FOOT	CA42	
43	CHASSIS	CA43R	With R290 Gas
44	TECHNICAL LABEL	CA55	
	END OF TRAVEL MICRO SWITCH	CA62	FOR WFP9T
	ELECTROVALVE AC220V	CA63	FOR WFP9T

Stainless Steel Body Fountain = Part number suffix S

*The Technical label on the side of the fountain identifies if it uses R134a or R290 gas.

AA First is a division of Circon Ltd : Registered in England 5121722

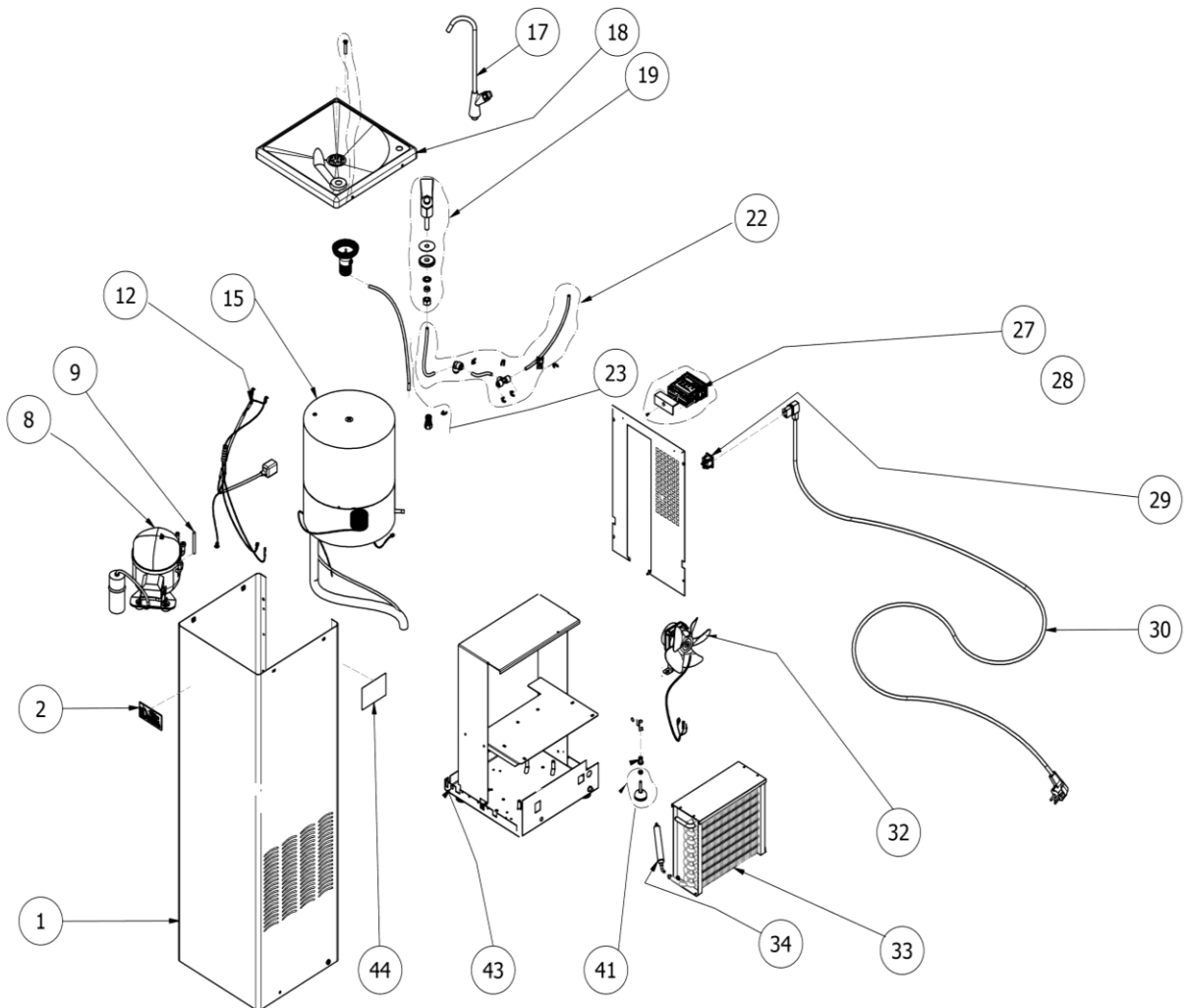
European HQ: Cedar House
Grange Farm
Long Lane
Newbury
RG14 2TF

T: +44 (0) 1635 202489
E: enquiries@aafirst.co.uk
W: www.aafirst.co.uk

Bureau Français: T: +33 (0) 640650708
E: lesley@aafirst.co.uk
W: www.aafirst.co.uk/french/



WFT6/WFP9T WATER FOUNTAIN
R290 GAS EXPLODED DRAWING



AA First is a division of Circon Ltd : Registered in England 5121722

European HQ: Cedar House
Grange Farm
Long Lane
Newbury
RG14 2TF

T: +44 (0) 1635 202489
E: enquiries@aafirst.co.uk
W: www.aafirst.co.uk

Bureau Français: T: +33 (0) 640650708
E: lesley@aafirst.co.uk
W: www.aafirst.co.uk/french/

