

DRINKTOWER

Installation, use and maintenance handbook

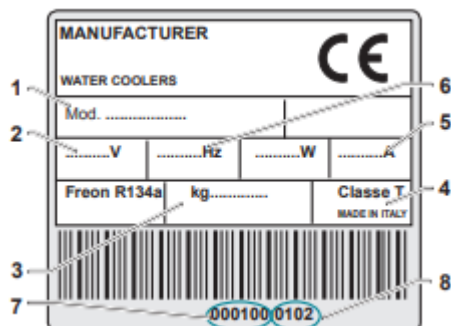


EN CONFORMANCE STATEMENT

This appliance has been manufactured with suitable materials for use with drinking water.

This product was designed, made and put on the market respecting the following conformities:

- Following EC requirements safety objectives of the 2014/35 UE/LVD;
- Protection requisites of 2014/30/UE EMC.



APPLIANCE DATA PLATE

- 1 Model
- 2 Supply voltage
- 3 Quantity of cooling gas
- 4 Class
- 5 Total absorption
- 6 Frequency
- 7 Serial number
- 8 Construction year-month

Cosmetal Installation Guidance

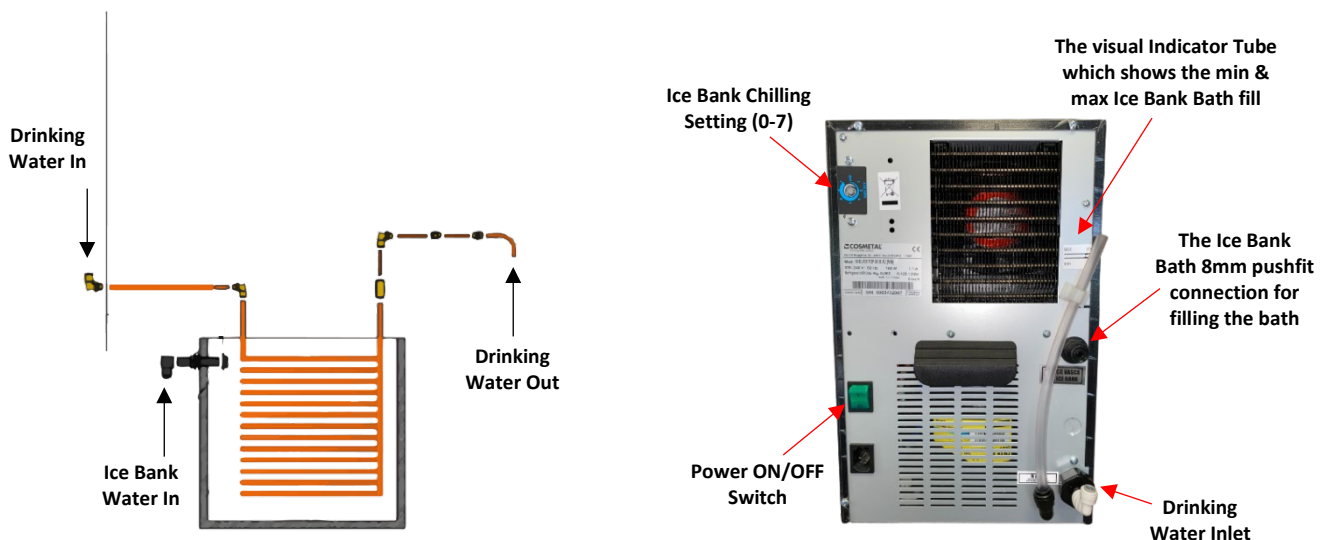
Caution: If the chiller has been lying down or upside down, leave it upright for at least 4 hours before use.

The below instructions are provided for summary guidance purposes for more detailed information please refer to the manual provided with the unit or download from our website.

1. **Select a suitable installation site:** Power within 1 metre, Potable water supply, Flat surface, Drainage in case of the Niagara FS or recessed drip trays, allow space around the cooler for ventilation – IN (Under counter) Models will require ventilation in the cupboard. Ensure you have a minimum of 2 bar water pressure and regulate the mains pressure with the pressure reducing valve to 3 bar.
2. **Connect the plumbing rail (PFRAILKITCOS)** to the mains, follow instructions provided with the kit. If using another kit, ensure you have the correct adapters and tubing before attempting installation. Cosmetal use 8mm fittings (equivalent to 5/16" imperial) on the inlet and 6mm fittings between the IN (under sink) units and the taps. Cosmetal supply the appropriate fittings as above with some 6mm and 8mm tubing. The PFRAILKITCOS plumbing rail has 8mm connections and a Fibredyne filter candle, both of which optimise the flow rate and chlorine removal capacity. Using a PFRAILKIT with Carbon Block Candle, or a PFRAILKITNANO with NANOF Candle requires ¼" diameter pipes. You will need an adapter at the Cosmetal unit's inlet to convert the ¼" to 8mm. The combination of the narrower ¼" pipe and the Carbon Block Candle can affect the flow rate adversely. To mitigate against that you can.
 - Change the Carbon Block Candle for an NANOF Candle which offers higher flow rates and a low pressure drop.
 - Reduce any ¼" pipe length should be as short as possible.
 - Open up the Pressure Regulator to increase the flow if on a low-pressure site.

We recommend you install a **scale removal filter with the Prostream boiler system** in hard water areas. We can supply the Brita C150 filter to facilitate this.

3. **To fill the ice bank;** refer to the manual for the different methods. Connect the pipe to the ice bank inlet and fill. Most models have a **visual indicator tube** on the back of the unit to identify the correct fill level. This tube can also be used to drain the ice bank before moving or relocation. Fill the ice bank to the max level. The Niagara free standing system does not have a visual indicator tube. Connect the drainage hose supplied at the back and drain into a bucket. Connect the incoming water to the ice bank inlet and fill the ice bank until the water runs from the drainage hose. To drain the Niagara ice bank you need to syphon or pump the water out.

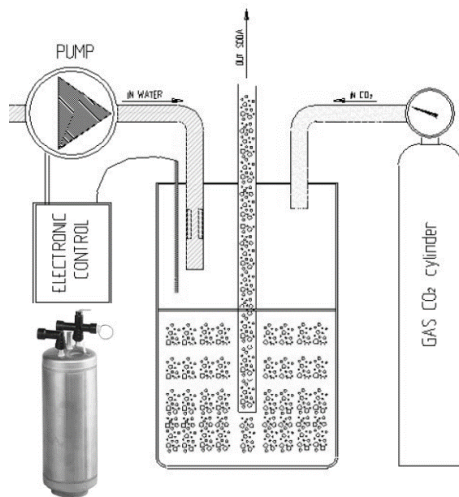


4. **Connect the inlet water supply:**

Disconnect incoming water feed from the ice bank and connect into the 8mm-5/16” water inlet fitting, located on the back of the cooler. Note some models have a 3/4” male BSP fitting, use the parts provide to adapt to 8mm.

5. **Turn the water and power on** and dispense water through all taps. Check for any leaks.

6. **With Gas versions,** connect the CO2 bottle to the CO2 Inlet. The recommended gas pressure should be no greater than 4 bar. Please note the CO2 pressure should be greater than the water pressure. Only turn the gas on after the tank has been filled (see step 5)



7. **Set the thermostat** we recommend you set the stat to 5 on the mechanical stats. (all models excluding the electronic control versions) Turn the stat clockwise to 5. Do not set to 7 as this could freeze the Ice bank.



8. **Set the thermostat on EC versions.** Thermostat settings need to be adjusted through the control panel. The default settings are -2 C for the summer months and +2 C for the winter. We recommend you set both to +2C. Please see the instruction manual for programming instructions. Failure to set the thermostat correctly could lead to a frozen ice bank.



EN 1 BEFORE USING THE APPLIANCE

1.1 WARNINGS



In order to use your appliance to its best, we advise reading these instructions carefully as they contain useful information.

- Keep this book for later use.
- When you have removed the packaging, make sure that the appliance is not damaged. Any damage must be reported to your carrier within 24 hours.



If the machine has been put down or turned upside down, wait for at least 8 hours before putting it into operation

- Make sure that installation and electrical wiring are carried out by a qualified technician according to the manufacturer's instructions and to the local norms in force. The electrical system must be equipped with an effective earth according to the law (46/90).

1.2 GENERAL PRECAUTIONS AND SUGGESTIONS



Before carrying out any maintenance or cleaning operation, remove the plug from the mains socket.

- Do not pull on the supply cable in order to remove the plug from the socket.
- When the appliance has been installed, make sure it is not resting on the mains supply cable.



The manufacturer reserves the right to change the product and its instructions manual without prior notice or updating of previous productions

EN 1 BEFORE USING THE APPLIANCE



Failure to comply with any of these safety regulations could cause fires, electric shocks or damage the machine

Place of installation

This equipment is intended for domestic and other similar uses, such as:

- Kitchen areas, shops, offices and other work environments
- Rural homes, hotels, motels and other residential buildings
- B&Bs and guest houses
- Catering services and similar retailers.
- Do not place the machine near inflammable solvents such as alcohol or diluents.
- Do not install the machine in excessively damp and dusty places, exposed to direct sunlight, outdoors or near to heat sources.
Machine installation in these places could cause fires or electric shocks.
- The appliance is not suitable for use in open places.

Electric power supply

- Do not connect or disconnect the machine from the socket with wet hands.
- Insert the plug into the wall socket firmly.
- Do not damage, modify, stretch, bend or twist the power cable.
Do not place heavy objects on the power cable.
- Do not connect the machine to a socket to which other equipment is connected (extensions, 2 or 3 plug adaptors, etc.)
- Do not use the machine if the power cable is tied or knotted.
- If smoke, unusual smells or strange noises are found coming from the machine, disconnect it immediately from the socket and contact the local retailer or technical service assistance.
Use of the machine in these conditions could cause fires or electric shocks.
- Periodically disconnect the machine from the socket and clean the plug and socket with a dry cloth.
If the machine is connected in a place exposed to dust, smoke or high humidity, the dust accumulated on the plug will absorb humidity and this could alter the insulation and trigger a fire.
- Do not spray water on the device; this could cause electric shocks or fires.
- The appliance must not be installed where water jets can be generated.
- Use a damp cloth to clean the machine. Do not use inflammable solvents such as alcohol, benzene or diluents. If inflammable substances come in contact with the electrical components inside the machine, they can cause fires or electric shocks.
- Before cleaning the machine, switch it off and disconnect it from the socket. Not being switched off or accidental switching on during cleaning could cause injuries to persons or damages to the machine.
- The equipment must not be used by children under 8 years of age or by people with physical, sensory or mental health problems, or people who lack the experience or the necessary knowledge, unless under surveillance and not before they have received the relevant instructions on how to use the equipment safely and they understand the inherent dangers.
Cleaning and maintenance for which the user is responsible must not be performed by children unless they are older than 8 yrs and supervised by an adult.

EN 2 REMOVAL OF PACKAGING

- Place the appliance in its installation site (chap. 5 - INSTALLATION).
- Cut straps **R** and remove carton **C**, polystyrene **F** and external plastic bag **S**.
- Do away with plastic bags **S** and polystyrene **F** immediately as they are a danger for children.
- Once the appliance is free from its packaging, remove the base **B**.

2.1 ADVICE ON HOW TO PROTECT THE ENVIRONMENT

Packaging

Packaging material is 100% recyclable.

For its disposal follow your local regulations.


The packaging material (plastic bags, polystyrene parts etc.) must be kept out of children's reach as it could be dangerous.

Information

This appliance does not contain CFCs (the cooling circuit contains a gas that is not harmful to the ozone layer).

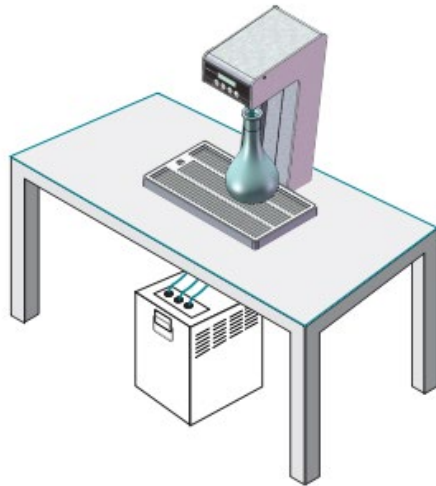
For further details, please refer to the serial data plate on the appliance.

Produkt
This appliance is marked according to the European directive 2012/19/EC on Waste Electrical and Electronic Equipment (WEEE). By ensuring this product is disposed of correctly, you will help prevent potential negative consequences for the environment and human health, which could otherwise be caused by inappropriate waste handling of this product.

 The symbol on the product, or on the documents accompanying the product, indicates that this appliance may not be treated as household waste. Instead it shall be handed over to the applicable collection point for the recycling of electrical and electronic equipment.

Disposal must be carried out in accordance with local environmental regulations for waste disposal. For more detailed information about treatment, recovery and recycling of this product, please contact your local city office, your household waste disposal service or the shop where you purchased the product.

2



EN 3 DESCRIPTION OF THE APPLIANCE

These appliances were designed to provide large quantities of still and carbonated cold water.

They are easy to use and manufactured using top quality materials, offering the utmost hygiene and ease of maintenance.

They should always be connected to a mains drinking water supply and can be fitted with special filtering kits.

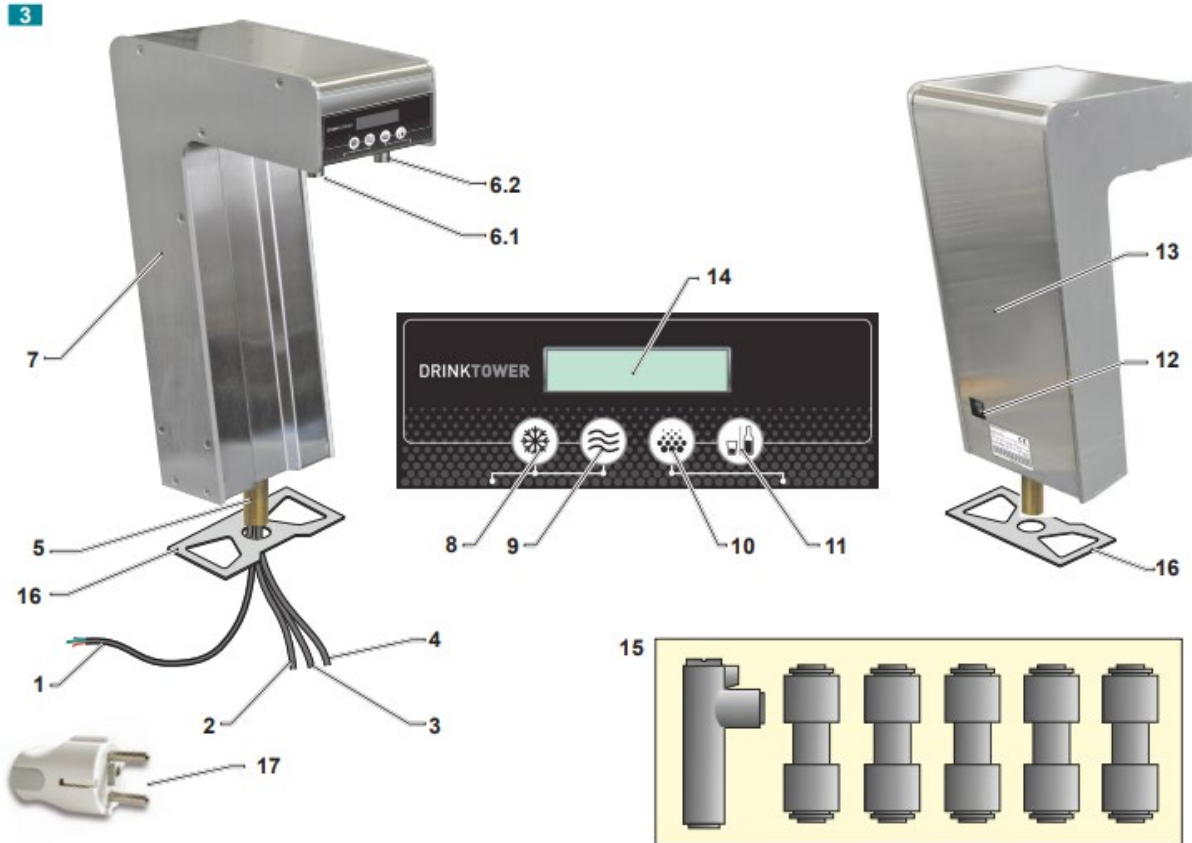
They can be used in various settings, ranging from cafés, restaurants, canteens, hospitals, public places, offices and domestic environments; they should always be installed indoors and in the environmental conditions described under the "technical features" heading.



The electrical power outlet must be in an accessible location. In the event of any device failures or malfunctions, never attempt to determine the problem by opening or tampering with the machine's closures and lids. Contact the manufacturer's technical assistance service.



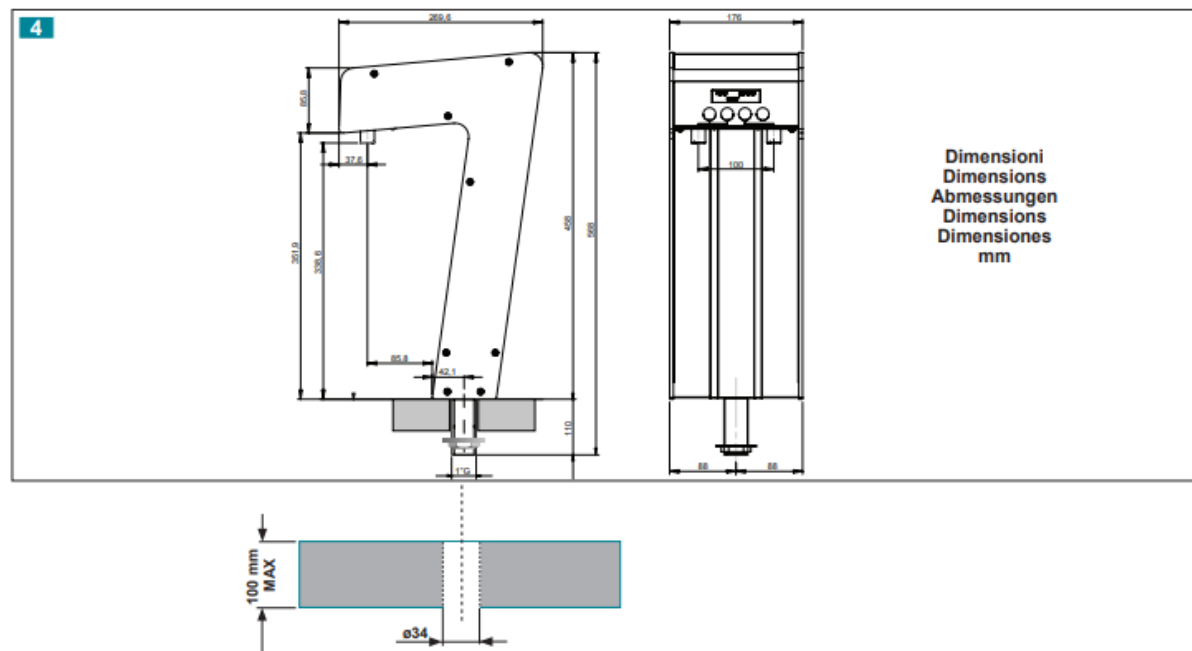
Warning! If the power cable is damaged, it must be replaced by the manufacturer, by an authorized technical assistance provider or else by an individual with similar qualifications, in order to prevent any risks



EN 3 DESCRIPTION OF THE APPLIANCE

- | | | | |
|-----|--------------------------------------|----|---------------------------------|
| 1 | Unsheathed power supply cable | 9 | Button for cold water |
| 2 | AMBIENT water pipe | 10 | Button for sparkling water |
| 3 | COLD WATER pipe | 11 | Shift button - Programming Menu |
| 4 | Sparkling water pipe (SODA) | 12 | Main ON/OFF switch |
| 5 | Threaded pipe | 13 | Data plates |
| 6.1 | Ambient and Cold nozzle | 14 | Display |
| 6.1 | Sparkling water nozzle | 15 | Installation kit |
| 7 | Structure | 16 | Countertop gasket |
| 8 | Button for water at room temperature | 17 | Plug |

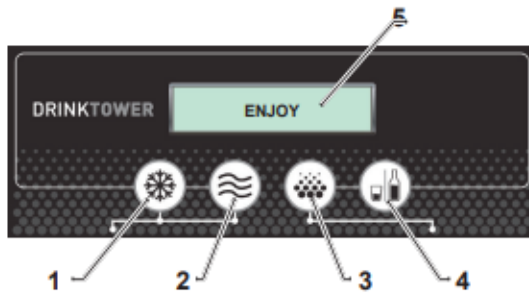
4 TECHNICAL CHARACTERISTICS



Alimentazione Supply Stromzufuhr Volt/Hz Aliment. Alimentación		230 / 1 / 50 Hz Eventuali voltaggi speciali sono indicati nella targhetta "matricola". Any special voltages are indicated on the plate "serial number". Alle Sonderspannungen sind auf der Platte "Seriennummer" angegeben. Les tensions spéciales sont indiquées sur la plaque "numéro de série" Cualquier tensión especiales están indicados en la placa de "número de serie".
Assorbimento totale Total rated input Gesamtaufnahme Absorption totale Total absorción	Watt	50
Peso netto Net weight Nettogewicht Poids net Peso neto	kg Lbs	5,5 12
Peso con imballo weight with package Gewicht mit Verpackung Poids avec emballage Peso con embalaje	kg lbs	6,0 13

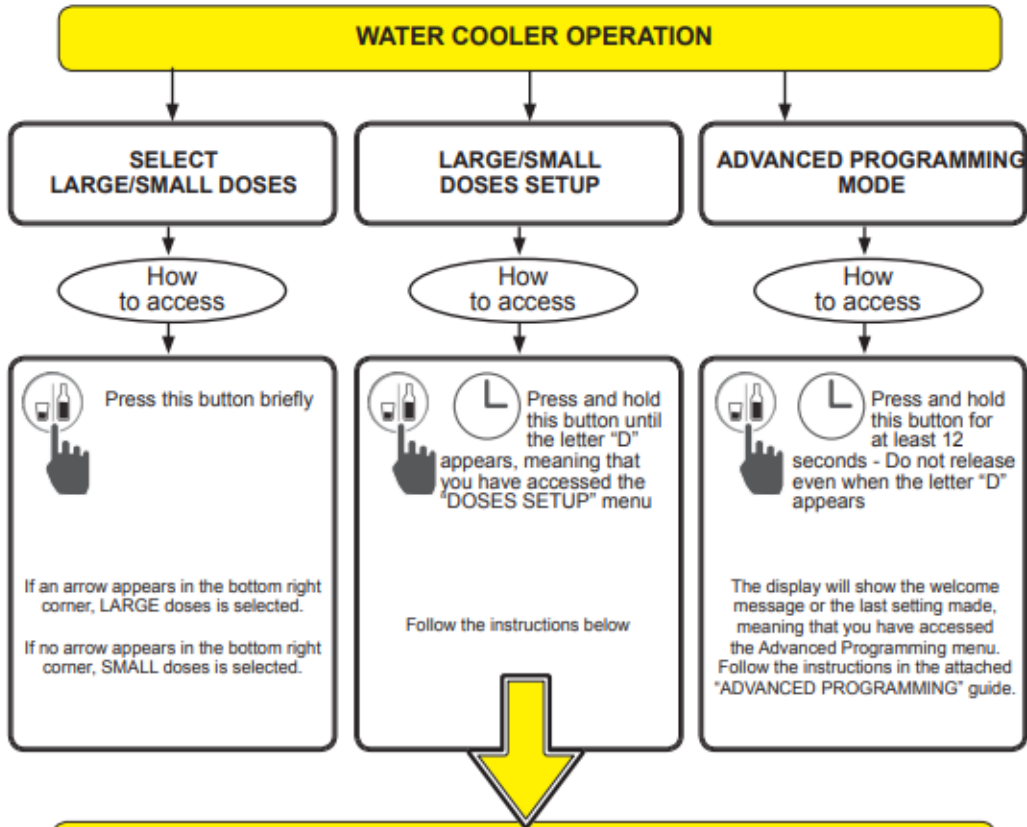
Temperatura ambiente	Min	10°C
Room temperature		
Raumtemperatur	Max	43°C
Temperature ambiente		
Temperatura ambiente		

4.1 CONDITIONS OF THE SURROUNDINGS



- 1 Button Chilled - Back (-)*
- 2 Button Room temp - Next (+)*
- 3 Button Sparkling - Confirm *
- 4 Button Menu - Select *
- 5 Starting message

(* In program mode)



LARGE/SMALL DOSES SETUP

You can select LARGE or SMALL doses for any kind of water – cold, room temperature or carbonated.

*The default dose settings are:
SMALL= 0.5 litres
LARGE= 1 litre*

To change the doses proceed as follows

<p style="text-align: center;">Setting SMALL doses</p> Press this button briefly. NOTE: No arrow should appear in the bottom right corner <ul style="list-style-type: none"> • Place the "SMALL" water container under the cold water nozzle • Press • When the required amount of water has been delivered press again to stop 	<p style="text-align: center;">Setting LARGE doses</p> Press this button briefly NOTE: An arrow should appear in the bottom right corner <ul style="list-style-type: none"> • Place the "LARGE" water container under the cold water nozzle. • Press • When the required amount of water has been delivered press again to stop <p><i>(to apply the EXTRA CC function to LARGE CARBONATED doses, the quantity set should be less than the container's capacity; the remaining quantity will be delivered by the EXTRA CC function (see ADVANCED PROGRAMMING))</i></p>
---	--

Repeat the procedure for ROOM TEMPERATURE and CARBONATED water (or COLD II), placing the container under the relative nozzle and pressing the corresponding button

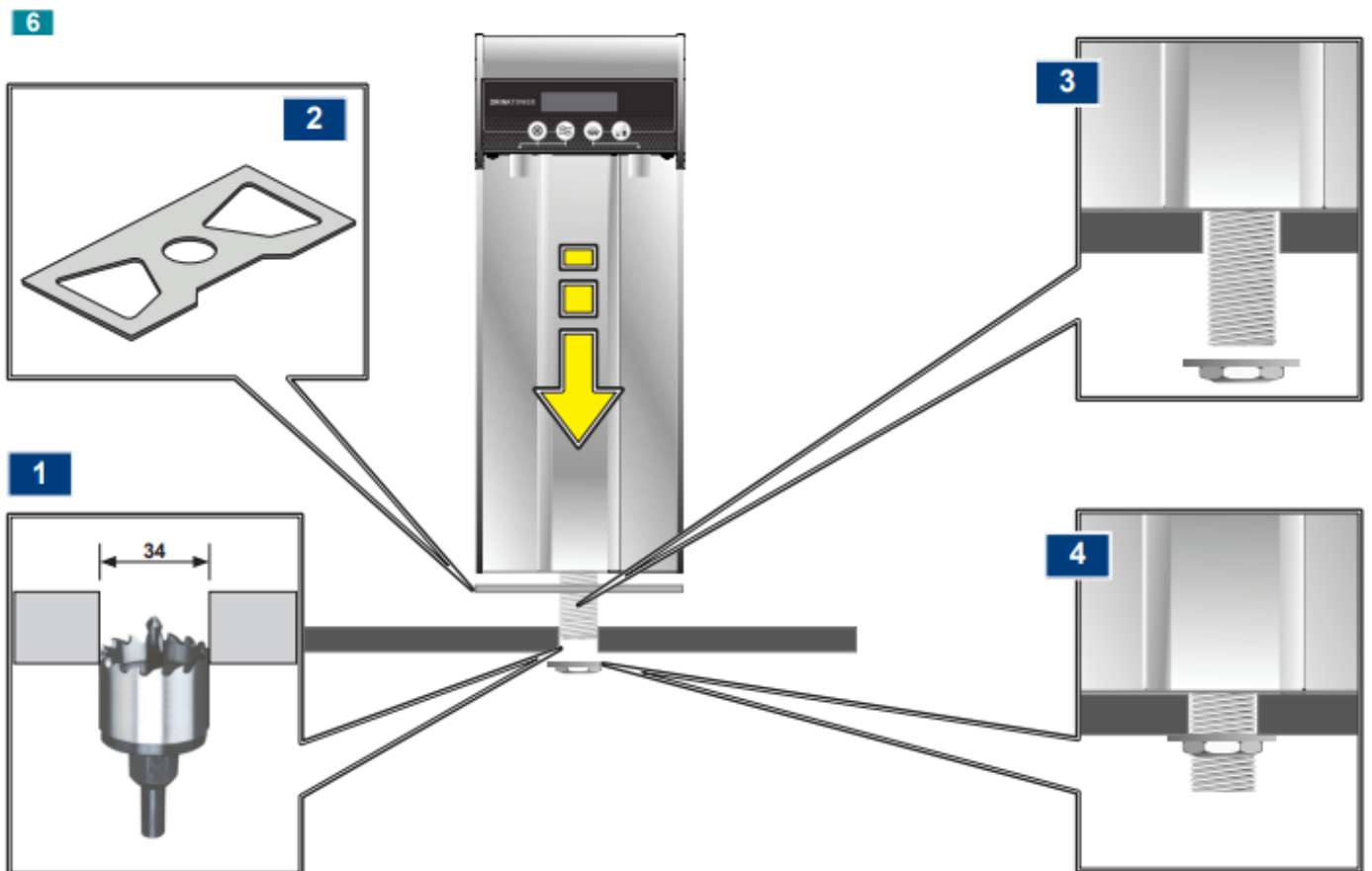
The DOSES SETUP menu will remain open if no further action is taken.

How to return to the startup screen → Press this button to go back to the STARTUP SCREEN




EN 8 ROUTINE MAINTENANCE

Cleaning the outside of the appliance	Clean the external part with a damp cloth, do not use solvents or abrasive detergents	
Cleaning the water dispensing spouts	Remove the steel nozzle nozzle using the appropriate spanner and eliminate all the limestone with a food descaling solution (fig.21.1 - 21.2).	Depending on the hardness of the water from the mains



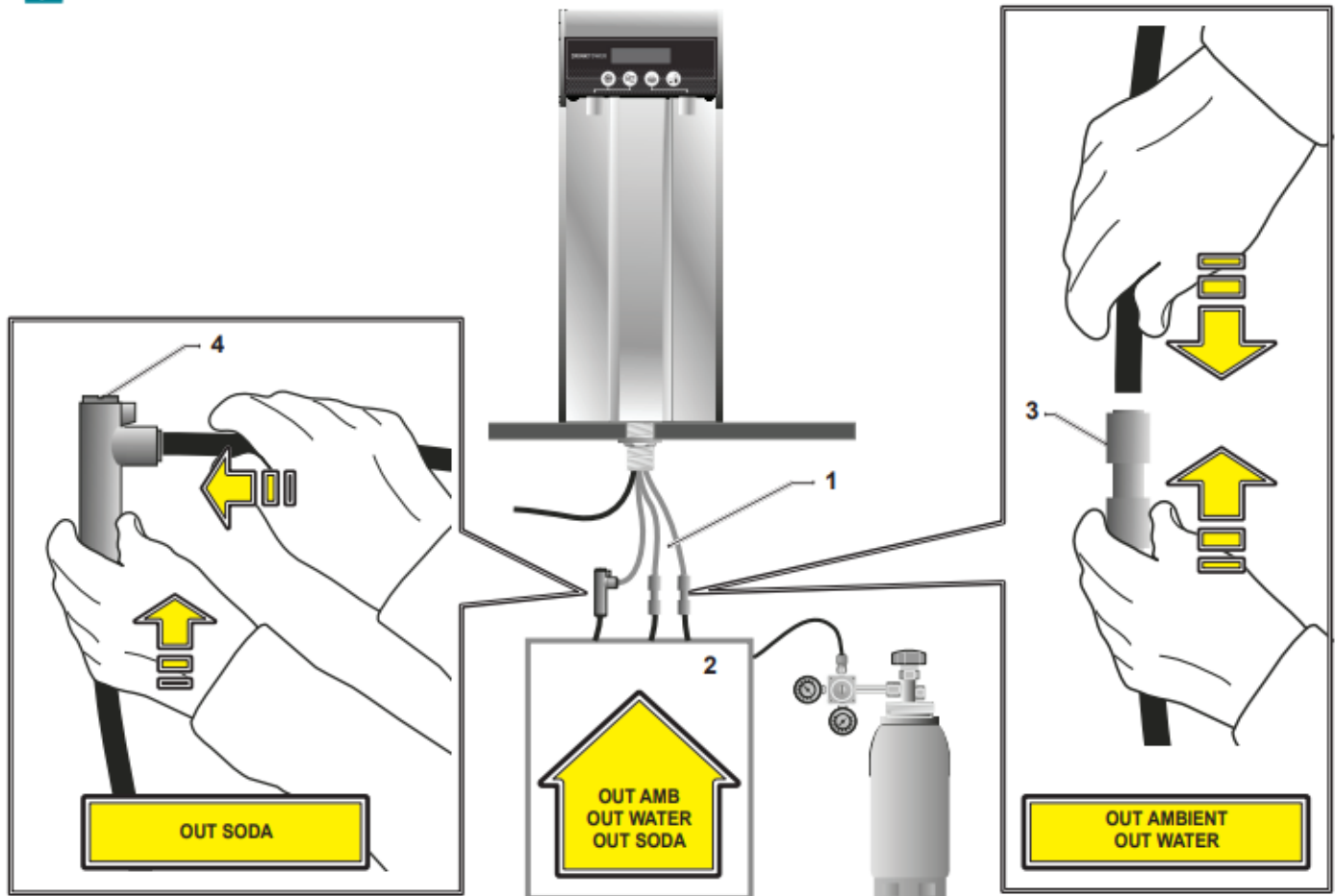
EN 9 INSTALLATION

9.1 POSITIONING THE APPLIANCE

 For the cooler installation see its own instruction manual

- Do not install the machine in excessively damp and dusty places, exposed to direct sunlight, outdoors or near to heat sources. Machine installation in these places could cause fires or electric shocks.
- The appliance is not suitable for use in open places.
- The appliance must not be installed where water jets can be generated.

- 1 Drill the countertop, the hole must be 34 mm (1,34 inches). Fix the appliance with the threaded locking ring.
- 2 Check the correct appliance position and tighten the nut.
- 3 Fix the appliance with the threaded locking ring
- 4 Check the correct appliance position and tighten the nut.



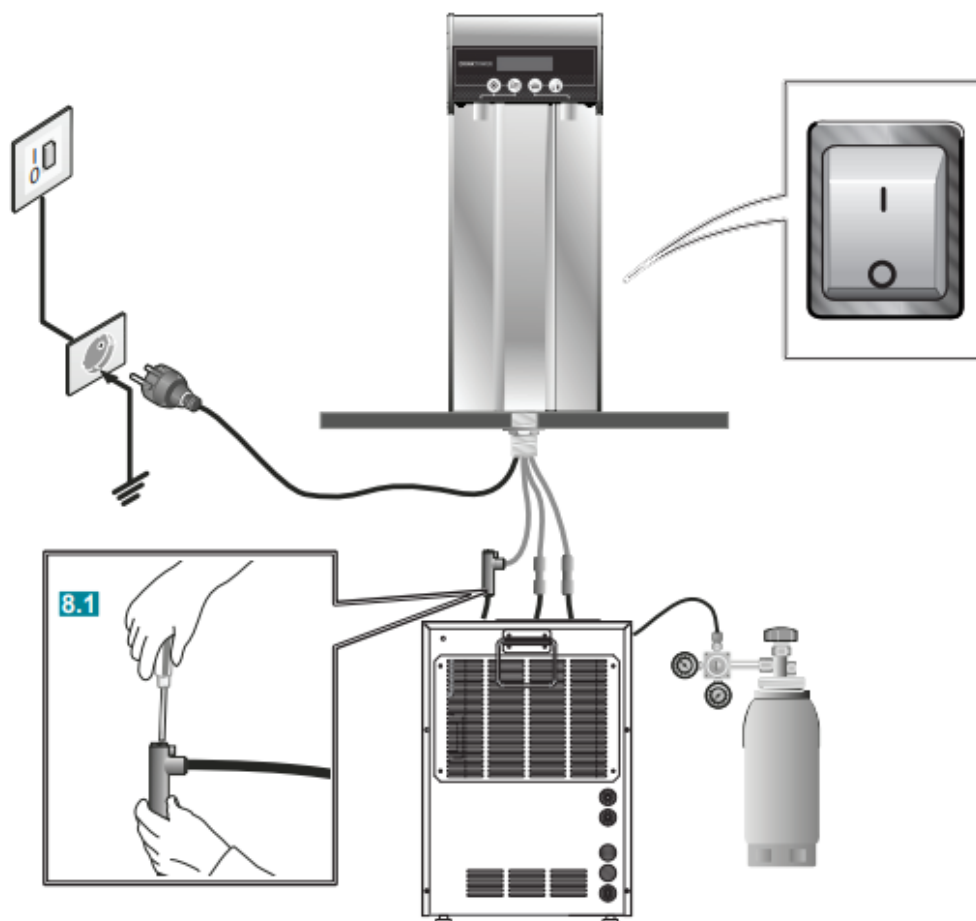
EN 9 INSTALLATION

5.2 WATER CONNECTION TO THE MAINS



During connection of the appliance to the mains water supply, all pre-existing tubes, gaskets and joints placed between the appliance and the water mains connection must be replaced with new material to avoid contamination.

- Connect water pipes 1 to the cooler 2, taking care to labels on the tubes, following the markings:
 - For OUT AMBIENT (Water at Room temperature) and OUT WATER (Cold Water) use the simple straight connectors 3. Use the reduction 8-6mm if necessary.
 - For OUT SODA connect the flow regulator 4 and the reduction 8-6mm if necessary.
- Properly push fittings and tubes for a good connection. Check if there isn't any water leak.



EN 9 INSTALLATION

9.3 ELECTRICITY CONNECTION

The appliance is supplied with unsheathed power cord. Only after its positioning in the Countertop, you can connect the electric plug. Install the plug in respect to safety and assembling rules.

Connection to the mains electricity supply is carried out by connecting the plug to a mains socket.

The supply socket must be equipped with an efficient earth plate and it must be sized for the load of the appliance (see technical characteristics).

Make sure that the mains voltage corresponds with what is specified on the data plate.

Make sure that there is an omnipolar switch above the socket with a minimum contact break of 3 mm protected by fuses of suitable amperage for the absorption of the appliance itself (see technical characteristics and data plate).

Connect the machine to a mains electrical network protected by a circuit breaker with a sensitivity equal to or less than 30 mA.



Warning!

If the power cable is damaged, it must be replaced by the manufacturer, by an authorized technical assistance provider or else by an individual with similar qualifications, in order to prevent any risks.

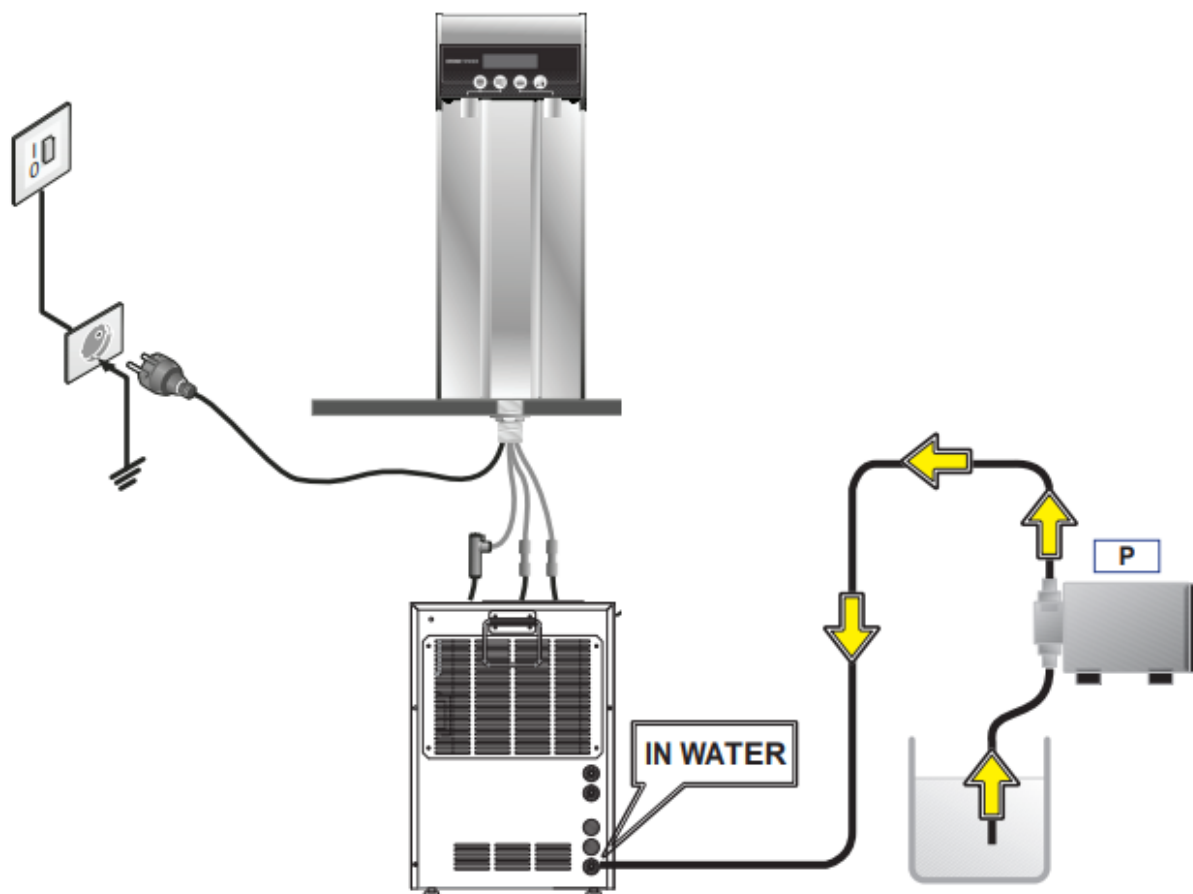


The main ON/OFF switch, allows the easy disconnection of the appliance from the mains electricity supply. The electrical power outlet must be in an accessible location.

9.4 STARTING AND SETTING OF SPARKLING WATER FLOW

Depending from the pump installed inside the cooler, set the sparkling water on the flow regulator (fig. 8.1), to obtain:

- 1 liter of sparkling water in 20 seconds, for professional NIAGARA coolers.
- 1 liter of sparkling water in 35-40 seconds for other models: J-class, H2OMY and NIVES.



EN 10 HYGIENIC CLEANING



WARNING! Considering that the products used for the hygienic cleaning are acid and alkali corrosive substances, disposable gloves must be used as well as glasses to protect your eyes. When this hygienic cleaning is carried out, you must keep to the product reaction times, percentages of hygienic detergent and quantity of water necessary for rinsing.

- The operation of higienization/sterilization has to be carried out every time the refrigerator is installed and:
 - every 6 months when it is used (*)
 - every time the water filter is changed
 - after an inoperative period of one or more weeks

(*) If the refrigerator is installed in Hospitals, Schools, Old people's homes, or Clinics, it is recommended to sterilize it every 3 months


Hygienic cleaning solution preparation

- Prepare **5 litres** of water
- Add to it **5%** of "hydrogen peroxide" at **100 volumes** min; for the doses, use a graded measure or an ordinary syringe

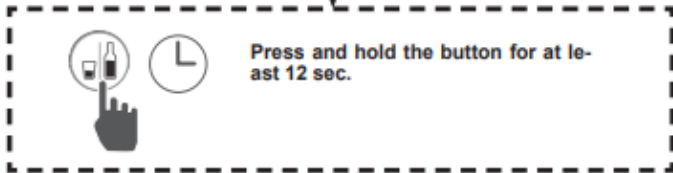
NB: if you use commercial hygienic cleaning solutions, keep to the instructions provided by the manufacturer and included in the package.

Warning! If the appliance is equipped with a chlorine filter, proceed as follows:
Remove the filter cartridge and fit on the false cartridge mod. **TEST CAN.**

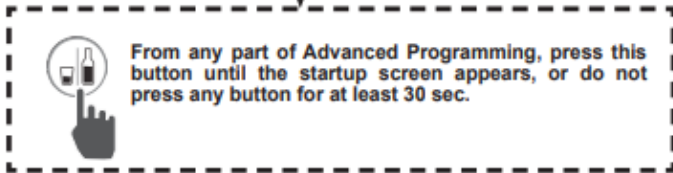
- With the help of a pump, connect the appliance's water inlet to the container with the disinfecting solution.
- Start the pump up so a disinfectant solution enters the machine and then, at the same time, open the taps so that the disinfectant runs from the distribution nozzles.
- Before the solution runs out, stop the pump and interrupt the dispensing.
- Leave the disinfectant to act for at least **20 minutes**.
- Reconnect the appliance to the mains water supply.
- Let at least **15 litres** of water flow out of the taps so as to **rinse** the hydraulic system **suitably**, before using the appliance again.

 This section is reserved for qualified operators only.

How to open the Advanced Programming menu



How to return to the startup screen

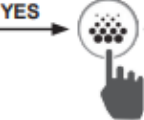


11.1

ENJOY

The first function in the Advanced Programming menu lets you change the welcome message that appears on the bottom line (max. 15 characters). The default message is "ENJOY"

How to change the welcome message



A blinking cursor will appear

- Button 1 -2 for selecting characters
 - Button for moving the cursor to the next characters
- To cancel a character place the cursor on the next character (button 3) and enter the new character; the space character is after the lowercase Z.

Once you have entered the message, press and hold this button to confirm (until the blinking cursor disappears)

Press this button to go to the next screen

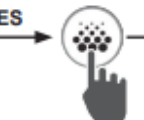
11.2

LANGUAGES



The water cooler can communicate with users in three languages: ITALIAN (0) - ENGLISH (1) - GERMAN (2) The default language is Italian.

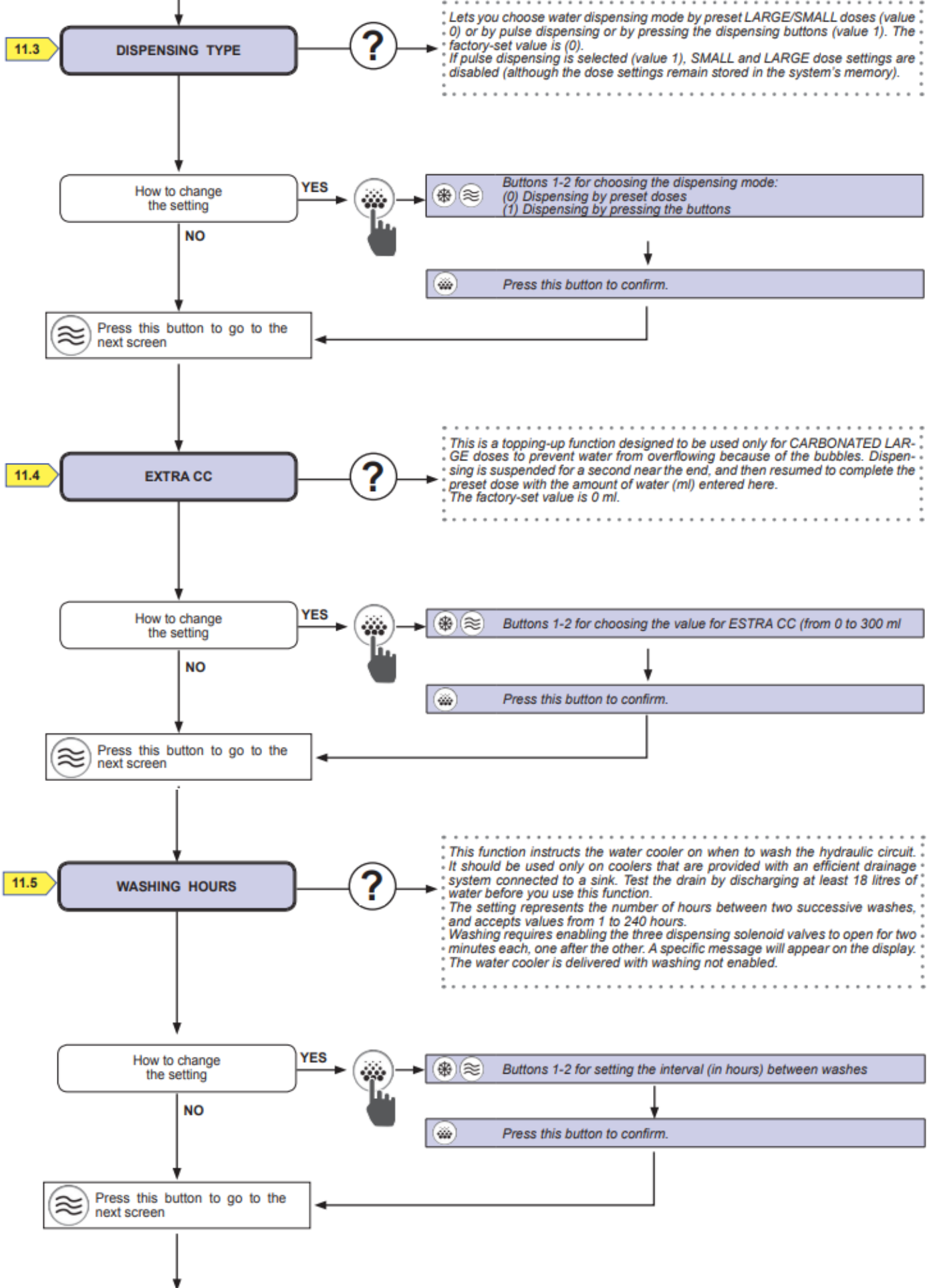
How to change the language

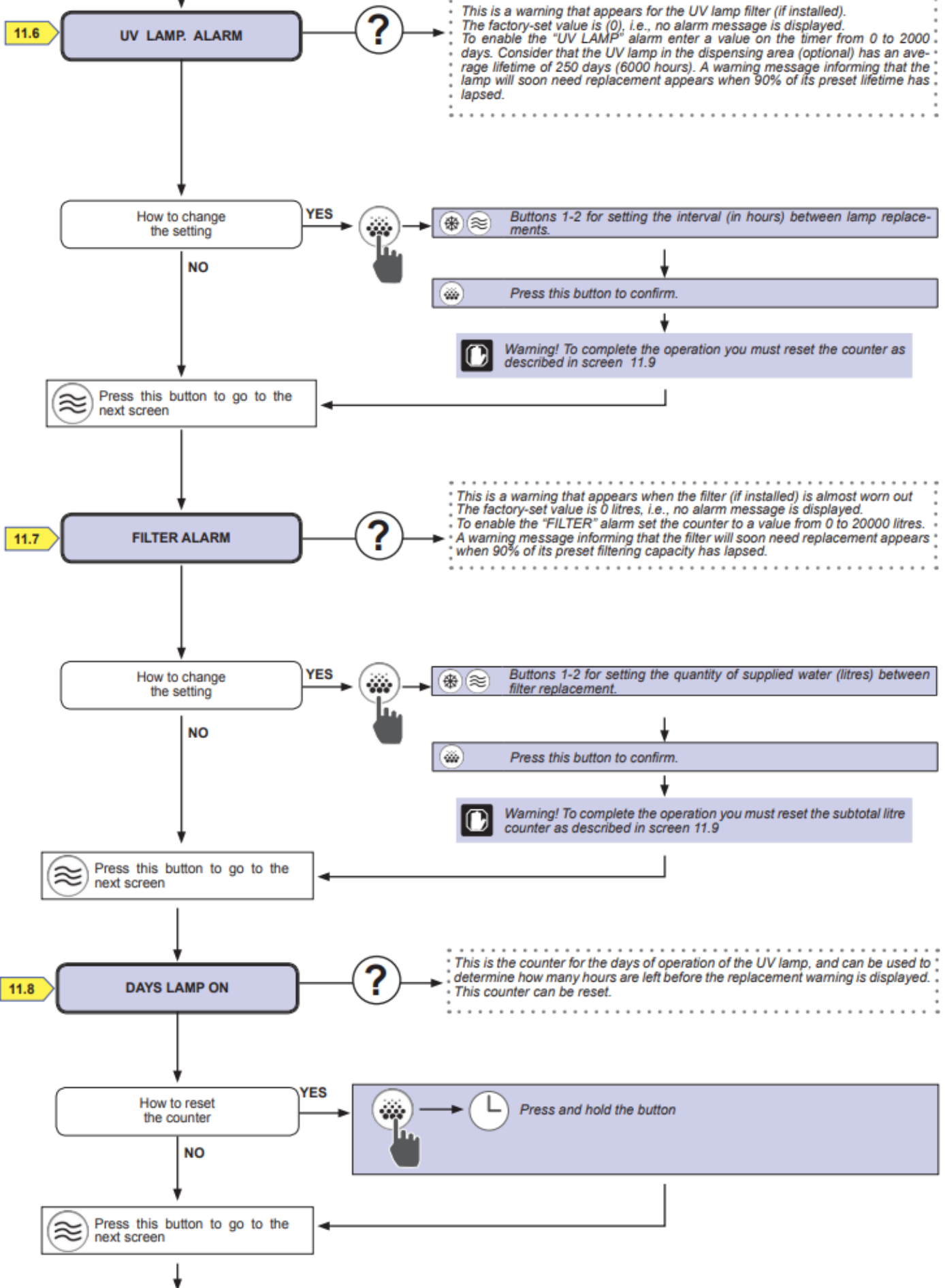


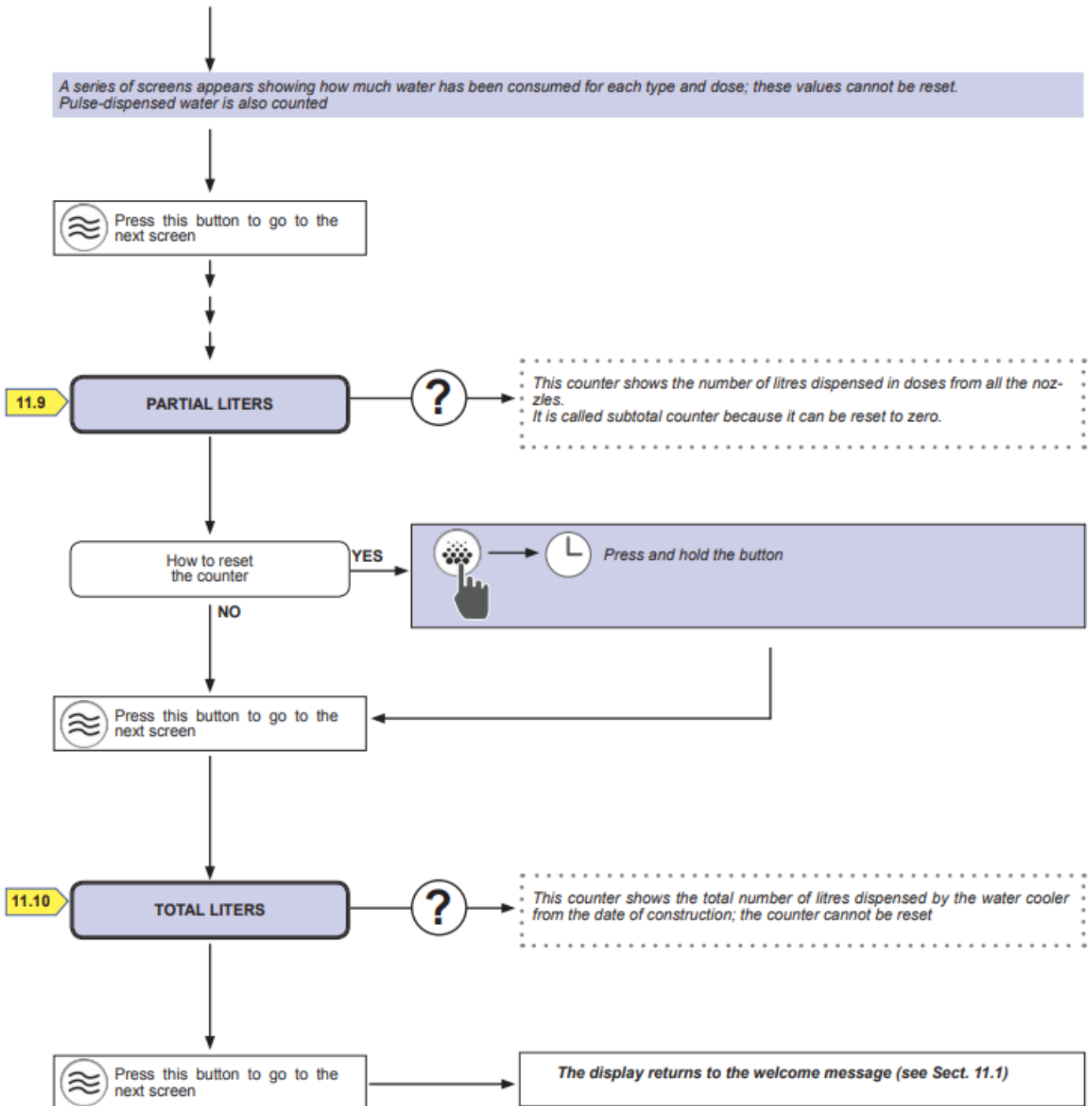
Buttons 1-2 for choosing the language: Italian (0) - English (1) - German (2)

Press this button to confirm.

Press this button to go to the next screen







Servizio di assistenza - Qualified operator service - Kundendienst - Service d'assistance - Servicio de asistencia

Il distributore / Installatore deve apporre il timbro per fornire il servizio di assistenza

The dealer / Installer has to mark this square for the service

Der Händler / Installateur muss dieses Feld zum Kundendienst abstempelein

Le distributeur / installateur doit apposer son cachet pour fournir le service d'assistance

El distribuidor / Instalador debe poner su sello para proporcionar el servicio de asistencia