

---

refreshingly different

**AA**<sup>•</sup>**FIRST**

Over 200,000 Water Coolers and Boilers  
sold tells the story of our success.

 **COSMETAL**<sup>®</sup>  
Drinking water solutions

COSMETAL Coolers Now Available From AA First

Cedar House  
Grange Farm  
Long Lane  
Newbury  
RG14 2TF

T: 44 (0) 1635 202489

E: [enquiries@aafirst.co.uk](mailto:enquiries@aafirst.co.uk)

---

[www.aafirst.co.uk](http://www.aafirst.co.uk)



# Water Coolers

Over 200,000 water coolers sold tells the story of our success

	ArcticRevolution70/ & ArcticRevolution70 KLARAN	ArcticRevolution70CL/ & ArcticRevolution70CL KLARAN	ArcticStar 55/ & ArcticStar 55 SIP	ArcticChill 88/ & ArcticChill 88 KLARAN	ArcticChill 88 CL2 & ArcticChill 88 CL KLARAN	ArcticChill 98/ & ArcticChill 98 KLARAN	ArcticChill 98 CL & ArcticChill 98 CL KLARAN	ArcticSpring100C/ & ArcticSpring100C KLARAN	3300X/ & 3300X SIP	4400FZ2	Jazz1000	AquaPoint 60	
		 <b>Coming Soon</b>			 <b>Contactless</b>		 <b>Coming Soon</b>					 <b>Coming Soon</b>	
Taps: Manual/Solenoid/Contact-less	S	S/CL	M	S	S/CL	S	S/CL	S	M	S	M	M	
POU/Bottled	POU	POU	P/B	POU	POU	POU	POU	POU	P/B	P/B	P B	B	
Floor Standing/Table Top	TT	TT	FL/TT	FL/TT	FL/TT	FL	FL	FL	FL/TT	FL	FL/TT	FL	
Chilled/Ambient	✓	✓	✓	CHILLED ONLY	CHILLED ONLY	✓	✓	✓	✓	✓	✓	✓	
Chilled/Hot	-	-	✓	-	-	-	-	✓	✓	-	✓	-	
Direct Chill/Tank Fed	DC	DC	TF	DC	DC	DC	DC	DC	TF	TF	TF	TF	
Dispensing Height	21cm	21cm	16cm	23cm	23cm	23cm	23cm	23cm	14cm	16cm	14cm	TBC	
Hygiene-Guard	✓	✓	✓	✓	✓	✓	✓	✓	-	✓	-	-	
(Influent Water Temp 16°C)	Chilled Below 12°C Ltr/h	10 ltr/h	10 ltr/h	20 ltr/h	30 - 40 ltr/h	30 - 40 ltr/h	30 - 40 ltr/h	30 - 40 ltr/h	30 - 40 ltr/h	20 ltr/h	20 ltr/h	20 ltr/h	TBC ltr/h
	Hot Water Hourly Capacity Ltr/h	-	-	9 ltr/h Above 90°C	-	-	-	-	18 ltr/h Above 90°C	5 ltr/h 85°C +	-	5 ltr/h 85°C +	-
	Boosted Hot Instant Draw Off	-	-	1.5 ltrs between 90°C & 95°C	-	-	-	-	-	-	-	-	-
	Increased Hot Water Capacity 0.9ltr at 85°C+	-	-	-	-	-	-	-	5ltr Above 90°C (At a constant temp)	-	-	-	-
SIPneo3 24/7 self sanitising system, factory installed (Floor Standing, Tank Fed Coolers only)	-	-	Available	-	-	-	-	-	Available	Available	Available	Available	
KLARAN UVC LED Water Purification System, factory installed (Direct Chill Coolers only)	Available	Available	-	Available	Available	Available	Available	Available	-	-	-	-	
CO2 Cooler 600gr/3125gr Cylinder	-	-	-	-	-	-	-	-	-	500/2700 Cups	-	-	
Dimensions:	POU FL	-	1135H 340W 340D	1135H 340W 340D	1135H 340W 340D	1135H 340W 340D	1135H 340W 340D	1135H 340W 340D	1135H 340W 340D	1135H 340W 340D	1135H 340W 340D	1015H 340W 335D	-
	POU TT	370H 240W 488D	370H 240W 488D	460H 340W 340D	460H 340W 340D	460H 340W 340D	-	-	460H 340W 340D	-	550H 340W 335D	-	
	Bottled FL	-	-	1150H 340W 340D	-	-	-	-	1150H340W 340D	1150H 340W 340D	1020H 340W 335D	1032H 326W 353D	
	Bottled TT	-	-	465H 340W 340D	-	-	-	-	465H 340W 340D	-	555H 340W 335D	-	
Integrated Cup Dispenser (Can Be Replaced By Blanking Panel)	-	-	✓	-	-	-	-	-	✓	✓	-	-	
ECO Sensor: Approx 25% Power-saving	-	-	✓	-	-	-	-	✓	-	-	-	-	
FloodGuard Flood Protection	✓	✓	-	✓	✓	✓	✓	✓	-	✓	-	-	
WRAS Approved (Certificate No. 1702077)	-	-	-	✓	✓	-	-	-	✓	-	-	-	
<b>Accessories for coolers:</b>	ArcticRevolution70 or 70B: Direct Chill Cooler. Ambient & chilled in cream colour or black	ArcticRevolution70CL or 70BCL: Direct Chill Cooler with contactless dispensing panel. Ambient & chilled in cream colour or black	ArcticStar55: Bottled & POU, Ambient & cold and hot & cold. Ambient & hot has a hot water booster button to raise the temperature to a max of 95°C	ArcticChill88: High capacity Direct Chill Cooler. Cold only  ArcticChill88 KLARAN: ArcticChill88 with KLARAN UVC LED automatic Water Purification System	ArcticChill88CL2: ArcticChill88 high capacity Direct Chill Cooler with Contactless dispensing panel  ArcticChill88CL KLARAN: ArcticChill88 with Contactless dispensing panel and with KLARAN UVC LED automatic Water Purification System	ArcticChill98: Direct Chill Cooler, Ambient & cold  ArcticChill98 KLARAN: ArcticChill98 with KLARAN UVC LED automatic Water Purification System	ArcticChill98CL: Direct Chill Cooler with Contactless dispensing panel  ArcticChill98CL-KLARAN: ArcticChill98CL with KLARAN UVC LED automatic Water Purification System	ArcticSpring100C: Direct Chill Cooler. Ambient & cold and hot & cold. Large 9 ltr hot water boiler for high capacity hot water output  ArcticSpring100C KLARAN: ArcticSpring100C with KLARAN UVC LED automatic Water Purification System	3300X: Bottled & POU Cooler. Ambient & cold and hot & cold. Robust & reliable  3300XSIP: 3300X Cooler with SIP automatic 24/7 self sanitising. SIP sleep mode can save up to 60% in electricity	4400FZ: Bottle & POU Cooler, ambient & chilled with CO2 carbonation	Jazz1000: Bottled Cooler, ambient & cold and hot & cold. Robust & reliable  Jazz1100: POU Cooler, ambient & cold and hot & cold. Robust & reliable	AquaPoint 60 Bottled Floor Standing Ambient/ Cold. Reliable economy cooler	

refreshingly different

www.aafirst.co.uk

# Water Fountains & Under-Sink Chillers

Over 200,000 water coolers sold tells the story of our success

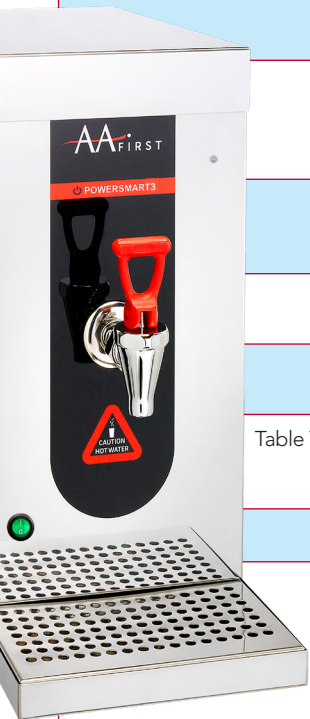
	Fountain WFT6	Contactless Hands-Free Fountain WFP9T	Under-sink Chiller UC800C with Manual Swan Neck Tap	Contactless Undersink Chiller UC800CL with Contactless Swan Neck Tap	FONT10 Wall Mounted Fountain with Bubbler	Contactless Drinking Fountain FONT10BCL with Contactless Bubbler	Contactless FONT10CL Wall Mounted Fountain with Contactless Swan Neck Tap	Drinking Fountain With Bottle Filler FONT30	Contactless Drinking Fountain With Contactless Bottle Filler & Contactless Bubbler FONT30CL
Mains Connected	✓	✓	✓	✓	✓	✓	✓	✓	✓
Mains Drainage	✓	✓	✓	✓	✓	✓	✓	✓	✓
Indoor & Covered Outdoor Installation	Indoor Only	Indoor Only	Indoor Only	Indoor Only	Suitable For Covered Outdoor	Suitable For Covered Outdoor	Suitable For Covered Outdoor	Suitable For Covered Outdoor	Suitable For Covered Outdoor
Manual Tap/Hands Free/Contact-less Tap	MAN	HF	MAN	CL	MAN	CL	CL	MAN	MAN
Floor Standing/Wall Mounted/Under-sink	FS	FS	US	US	WM	WM	WM	WM	WM
Dispensing Height For Bottles	21cm	21cm	20cm	23cm	N/A	N/A	23cm	35cm	35cm
Drinking Bubbler	✓	-	-	-	✓	✓	-	✓	✓
Ambient Water	-	-	-	-	✓	✓	✓	✓	✓
Chilled Water	26 ltr/h	26 ltr/h	5 ltr/h	5 ltr/h	Add UC800 for Chilled Water	Add UC800 for Chilled Water	Add UC800 for Chilled Water	Add UC800 for Chilled Water	Add UC800 for Chilled Water
Dimensions (mm)	1015H X 305W X 305D	1015H X 305W X 305D (PEDAL + 65D)	290H X 410W X 210D	290H X 410W X 210D (TAP + 300H)	220H X 310W X 345D	220H X 310W X 345D	220H X 310W X 345D (TAP + 300H)	750H X 330W X 370D	750H X 330W X 370D
Description	Durable fountain with push button swan neck and bubbler. 26ltr/h capacity below 10°C from in-fluent water temperature of 20°C	Hands-free, foot pedal controlled fountain with tamper resistant swan neck which is screwed to the drip tray. Without bubbler to avoid bacterial contamination. The same high spec as the WFT6	The UC800C under-sink chiller has an attractive chrome manual swan neck tap	UC800CL Undersink chiller with a contactless swan neck tap. The swan neck tap has an infra-red sensor which activates the dispensing through hand movement	The FONT10 has a Bubbler to dispense water. Robustly built and easy to install, the FONT meets the growing need of dispensed drinking stations indoors or in covered outdoor areas	The FONT10BCL drinking fountain has an infra-red sensor which allows for contactless dispensing to avoid hand to Bubbler contact contamination. Robustly built and easy to install, the FONT meets the growing need of dispensed drinking stations indoors or in covered outdoor areas	This contactless wall mounted fountain combines our FONT10 with a contactless swan neck tap. The infra-red sensor of the tap activates dispensing water through hand movement	The FONT30 Wall mounted drinking fountain with bubbler and bottle filler. Robust build and easy to install it meets the growing need of dispensed drinking stations indoors and in covered open spaces	The FONT30CL wall mounted drinking fountain has a contactless bottle filler and a contactless Bubbler. Both have a separate infra-red sensor which activates dispensing through hand movement in front of the sensor. Robust build and easy to install it meets the growing need of dispensed drinking stations indoors and in covered open spaces
<b>Accessories</b>									
Plumbing & Filter Kits	✓	✓	✓	✓	✓	✓	✓	✓	✓
Cowling to secure WFT6 and WFP9T to the wall	✓	✓	-	-	-	-	-	-	-





# Water Boilers

To Help You Grow Your Business



	1200L	Power Smart 3	EZYTAP75 / EZYTAP75T (Taller Tap)	EZYTAP7800 / EZYTAP7800T (Taller Tap)	1000C	1500	WA5
Boiler/Boiler & Chiller	B	B	B	B&C	B	B	B
Instant Draw Off	8 ltr	6 ltr	3.5 ltr Hot + Ambient	3.5 ltr Hot 2 ltr Chilled	5 ltr	11.5 ltr	5 ltr
Capacity ltr/h	17 ltr/h	17 ltr/h	14 ltr/h + Ambient	14 ltr/h + 8 ltr Chilled	27 ltr/h	27 ltr/h	27 ltr/h
Hot Only Hot & Ambient Hot & Chilled	Hot Only	Hot Only	Hot & Ambient	Hot & Chilled	Hot Only	Hot Only	Hot Only
Dispensing Height	-	-	18.5cm (EZYTAP75) 24cm (EZYTAP75T)	18.5cm (EZYTAP7800) 24cm (EZYTAP7800T)	-	-	-
Dimensions	560H 260W 260D	436H 215W 345D	329H 220W 352D	Boiler 329H 220W 352D Chiller 265H 200W 380D	440H 216W 345D	590H 240W 340D	438H 290W 207D
Table Top/Floor Standing Wallmount Tap & Undersink	Table Top	Table Top	Tap & Undersink	Tap & Undersink	Table Top	Table Top	Wallmount
ECO Sensor	-	✓	-	-	-	-	-
	Economy boiler - sturdy and reliable	Low height with 24/7 timer to turn the boiler off. Can save you up to £40 p.a. in electricity and 175kg in carbon production	The electronic EZYTAP75/75T provides hot and ambient water and is connected to an undersink boiler. The EZYTAP75T has an extra tall dispensing height of 24cm for bottle filling	The electronic EZYTAP7800/7800T provides hot and chilled water and is connected to an undersink boiler and the UC800B undersink chiller. The EZYTAP7800T has an extra tall dispensing height of 24cm for bottle filling	Counter top boiler for tight spaces	Top of the range high capacity table top boiler	High capacity wall mounted boiler

refreshingly different

Next Day Delivery  
Technical and Marketing Support  
Friendly and Personal Service

[www.aafirst.co.uk](http://www.aafirst.co.uk)

## Water Coolers & Under-Sink Units

NIAGARA FS 120



NIAGARA TOP 120 & NIAGARA TOP 180



NIAGARA IN 120



HI CLASS TOP 30



H20MY IN 15



J CLASS IN 30



### Type Of Water Dispensed



= Ambient Water



= Chilled Water



= Sparkling Water



= Contact-Less Dispense



= Electronic Control

**Product Code Key:**  
 FS = Floor Standing    TT = Table Top    IN = Under Bench    IB = Ice Bank    AC = Ambient & Cold    WG = With Gas    C8 = Metallic Surface    EC = Electronic Control

Code	Description	(FS/TT/IN)	Hourly Capacity (Ltr/H)	Instant Draw Off (Ltrs)	Ice Bank (IB)						Requires Gas Regulator REGCO2		Weight (KG)	Dimensions (CM) WxDxH
COS 01801709	Niagara 120 IB AC C8	FS	120	70	✓	✓	✓	-	✓*	-	-	✓	51	48 x 40.5 x 148
COS 01801710	Niagara 120 IB AC WG C8	FS	120	70	✓	✓	✓	✓	✓*	-	-	✓	59	48 x 56 x 148
COS 01901612	Niagara 120 IB AC WG C8 EC	FS	120	70	✓	✓	✓	✓	✓*	✓	-	✓	59	48 x 56 x 148
*CONTACT-LESS UPGRADE AVAILABLE: COS099479 - RETROFIT KIT TOUCHLESS NIAGARA 120AC														
COS 01973508	Niagara TOP 120 IB AC WG C6 EC	TT	120	70	✓	✓	✓	✓	✓*	✓	-	✓	54	48.2 x 49 x 51
COS 01974108	Niagara TOP 180 IB AC WG C6 EC	TT	180	100	✓	✓	✓	✓	✓*	✓	-	✓	54	48.2 x 49 x 51
(NIAGARA TOP 120/180 IB AC WG C6 EC - Compatible with optional drip tray VR-IS)														
COS 01704905	NIAGARA IN 120 IB AC WG C8	IN	120	70	✓	✓	✓	✓	-	-	-	✓	46	35 x 48 x 50
(NIAGARA IN 65 IB ACWG C8 - Compatible with DRINK TOWER, G400 ACWG & G72 WG taps and optional drip tray VR-I)														
COS 02181061	HI CLASS TOP 30 IB AC	TT	30	7	✓	✓	✓	-	✓*	-	-	✓	23	26.2 x 55.2 x 40.7
COS 02181041	HI CLASS TOP 30 IB AC WG	TT	30	7	✓	✓	✓	✓	✓*	-	✓	✓	23	26.2 x 55.2 x 40.7
*CONTACT-LESS UPGRADE AVAILABLE: COS099482-1 - RETROFIT KIT TOUCHLESS HI-CLASS 30 ACWG BLACK & AC BLACK														
COS 02181048	HI CLASS TOP 30 IB AC WG	TT	30	7	✓	✓	✓	✓	✓	-	✓	✓	23	26.2 x 55.2 x 40.7
COS 099437	Base Cabinet TOP 30	<b>Optional Cabinet:</b> Cooler cabinet with integrated cup dispenser and internal filter compartment												
COS 05001001	H20MY IN 15 IB AC	IN	15	3	✓	✓	✓	-	-	-	-	✓	15	26 x 23.5 x 40.7
(H20MYIN 15 IB AC - Compatible with COBRA 2 tap and optional drip tray VR-I)														
COS 05002001	H20MY NI 15 IB AC WG	IN	15	3	✓	✓	✓	✓	-	-	✓	✓	19	26 x 30 x 40.7
(H20MY IN 15 IB ACWG - Compatible with G400 AC WG & G72 WG taps and optional drip tray VR-I)														
COS 01641201	J CLASS IN 30 IB AC	IN	30	7	✓	✓	✓	-	-	-	-	✓	21	25.5 x 40 x 40
(J CLASS IN 30 IB AC - Compatible with COBRA 2 tap and optional drip tray VR-I)														
COS 01641210	J CLASS IN 30 IB AC WG	IN	30	7	✓	✓	✓	✓	-	-	✓	✓	21	25.5 x 40 x 40
(J CLASS IN 30 IB AC WG - Compatible with DRINK TOWER, G400 AC WG & G72 WG taps and optional drip tray VR-I)														



NIAGARA FS 120



NIAGARA TOP 120  
NIAGARA TOP 180



NIAGARA IN 120



HI CLASS TOP 30



H20MY IN 15



J CLASS IN 30

## Taps & Drip Trays

DRINK TOWER



COBRA 2



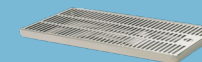
G400 ACWG



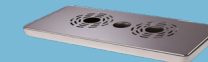
G72 WG



Drip Tray VR-I



Drip Tray VR-IS



CODE	Name	Description	NIAGARA IN		H20MY IN		J CLASS IN		DRIP TRAY VR-I	
			AC	ACWG	AC	ACWG	AC	ACWG		
COS 099262	DRINK TOWER V19 EC AC WG	Electronically controlled tap for ambient and chilled, or chilled and CO2 carbonated water	✓	✓	✓	✓	✓	✓	✓	
COS 099423	Cobra 2	A 2 way Chrome-Plated Manual Tap	✓	✓	✓	✓	✓	✓	✓	
COS 099430	G400 ACWG	Electronic Tap for Ambient, Chilled and CO2 Carbonation	-	✓	-	✓	-	✓	✓	
COS 099149	G72 WG	Manual Two Way Tap for Chilled and CO2 Water	-	✓	-	✓	-	✓	✓	
COS 090024	Drip tray VR-I	Dimensions (CM) 40.5W x 22.5D x 2.8H	✓	✓	✓	✓	✓	✓		
COS 099113	Drip tray VR-IS	Dimensions (CM) 40.8W x 18.9D x 3.2H	Compatible Drip Tray For The <b>Niagara TOP 120 IB AC WG C8 EC</b> (Inox Hook On Drip Tray)							

## Installation Rail & Filter (To connect Cosmetal Water Coolers & Under-sink Units to a mains water supply)



Code	Description	
PFRAILKITCOS	Installation Rail with high capacity replacement Filter Candle and re-usable Filter Housing. Includes Compression Fittings, Non-Return Valve, Water Block and Pressure Reducing Valve.	✓
FILTBCM	High capacity Carbon Fibre dyne replacement Filter Candle with Siliphos 20,000 litre capacity	✓