

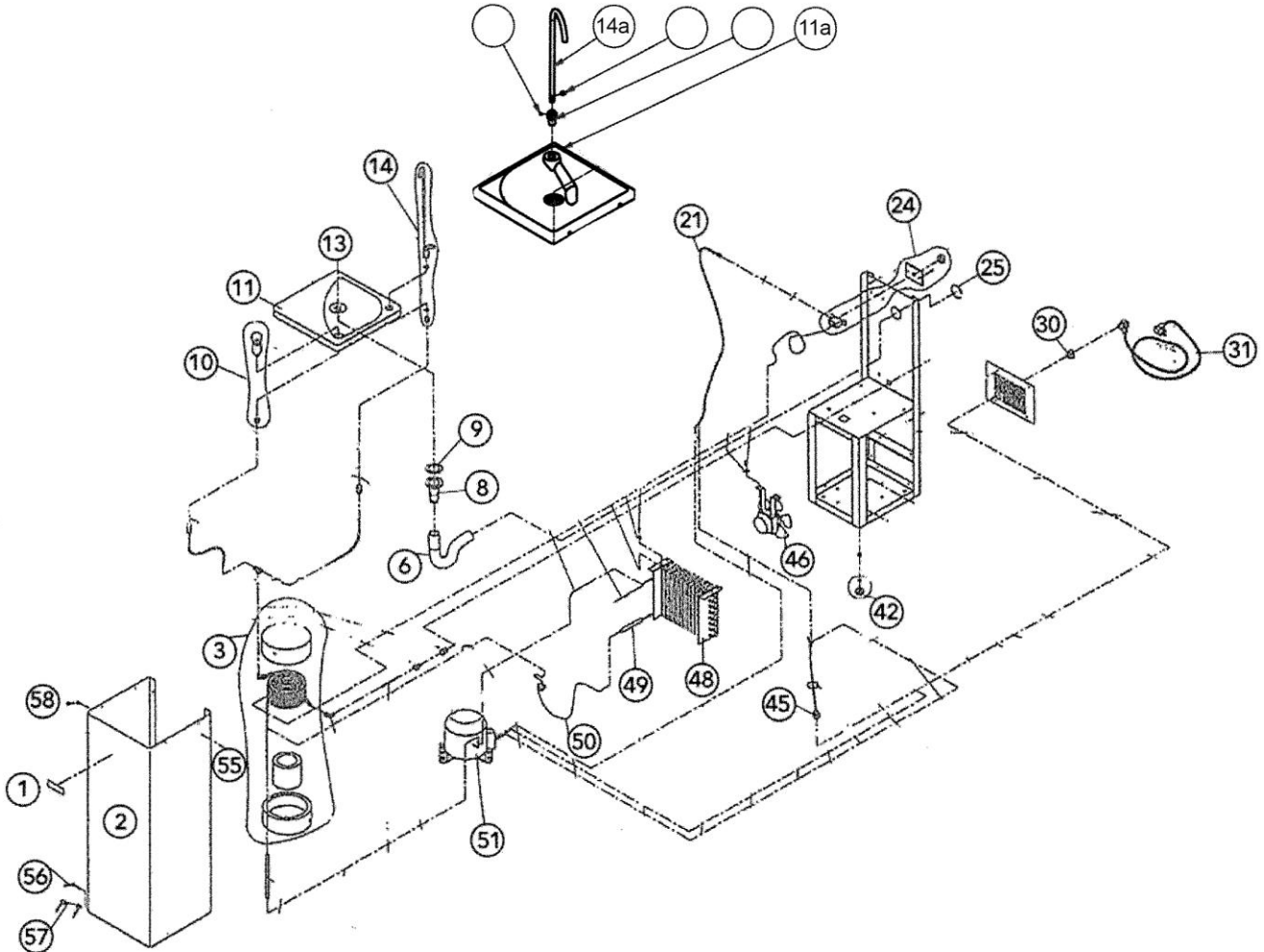
WFT6/WFP9T WATER FOUNTAIN
R134a Gas PARTS LIST

No	Description	Code	Remarks
1	AA FIRST LOGO	CA01	
2	EXTERIOR CASING	CA02S	
3	COLD TANK COMPLETE	CA03S	
6	WASTE TUBING	CA06	
8	DRAIN FITTING	CA08	
9	DRAIN SEAL	CA09	
10	BUBBLER	CA10	
11	DRIP TRAY WFT6	CA11S	
11a	DRIP TRAY WFP9T	CA11A	FOR WFP9T
13	SCREW SYPHON	CA13	
14	SWAN NECK WFT6 PUSH BUTTON	CA14	Use Glass Filler PBC
14a	SWAN NECK FOR THE WFP9T	CA14A	FOR WFP9T
21	THERMOSTAT CABLE	CA21	
24	THERMOSTAT COMPLETE	CA24	
25	GROMMET	CA25	
30	MAINS SOCKET	CA30	
31	MAINS CABLE	CA31	
42	ADJUSTABLE FOOT	CA42	
45	FAN SUPPLY CABLE	CA45	
46	FAN MOTOR	CA46	
48	CONDENSER	CA48	
49	FILTER / DRYER	CA49	
50	CAPILLARY	CA50	
51	COMPRESSOR	CA51	
55	TECHNICAL LABEL*	CA55	
56	SCREW 6 X 25 (ALLEN)	CA56S	
57	NYLON CASE SPACER	CA57S	
58	CASING SQUARE NUT	CA58S	
59	PRESSURE RELIEF VALVE	CA59	Introduced 2014
60	BACK COVER (OPTIONAL)	CA60	Oct 2014
61	BACK COWLING STAINLESS (OPTIONAL)	CA61	Oct 2015
	END OF TRAVEL MICRO SWITCH	CA62	FOR WFP9T
	ELECTROVALVE AC220V	CA63	FOR WFP9T

Stainless Steel Body Fountain = Part number suffix S

*The Technical label on the side of the fountain identifies if it uses R134a or R290 gas.

WFT6/WFP9T WATER FOUNTAIN
R134a Gas EXPLODED DRAWING



AA First is a division of Circon Ltd : Registered in England 5121722

European HQ: Cedar House
Grange Farm
Long Lane
Newbury
RG14 2TF

T: +44 (0) 1635 202489
E: enquiries@aafirst.co.uk
W: www.aafirst.co.uk

Bureau Français: T: +33 (0) 640650708
E: lesley@aafirst.co.uk
W: www.aafirst.co.uk/french/

