

## ArcticChill 108 Series Water Coolers Parts List

| NO.  | DESCRIPTION                              | CODE      | REMARKS                          |
|------|------------------------------------------|-----------|----------------------------------|
| 1    | Top POU Cover                            | WB3301    |                                  |
| 3, 4 | Drip Tray Complete                       | WB552022N |                                  |
| 5    | Hygiene Guard Clear Type Nozzle          | WB8819    |                                  |
| 6A   | Upper Front Panel Complete               | WB10806C  | 6, 7, 8, 28, 39, 40, 50          |
| 6B   | Upper Front Panel Complete (CL printing) | WB10806CI | 6, 7, 8, 28, 39, 40              |
| 7,8  | Push Button Facia Complete               |           | Included with 6A & 6B 108 Logo   |
| 9A   | Adjustable Foot Floor Standing           | WB3327    |                                  |
| 9B   | Adjustable Foot Tabletop                 | WB3327T   |                                  |
| 10A  | Rear Panel Floor Standing                | WB3309    | For R-600a                       |
| 10B  | Rear Panel Tabletop                      | WB8804NR  | For R-600a                       |
| 11   | Tank Bracket                             | WB8805    |                                  |
| 12   | Side Panel Floor Standing                | WB3305    | Left & Right Universal           |
| 13A  | Side Panel Tabletop                      | WB33048L  | Left side                        |
| 13B  | Side Panel Tabletop                      | WB33048R  | Right side                       |
| 14A  | Base Flor Standing                       | WB3310    |                                  |
| 14B  | Base Tabletop                            | WB3310T   |                                  |
| 15   | Solenoid & PCB Bracket                   | WB10815   |                                  |
| 16   | Lower Front Panel                        | WB3307    |                                  |
| 17   | Filter / Drier                           | WB4453    |                                  |
| 18A  | Condenser Floor Standing                 | WB8808    | Non-stocked Item                 |
| 18B  | Condenser Tabletop                       | WB8808T   | Non-stocked Item                 |
| 19   | Wiring Loom                              | WB10819   |                                  |
| 20   | Mains Lead                               | WB3333    |                                  |
| 21   | Mains Socket                             | WB3348    |                                  |
| 22   | On/Off Switch                            | WB3322    |                                  |
| 23   | Thermistor Cold                          | WB8810    |                                  |
| 24   | Inlet Solenoid                           | WB4486    | Grey coil                        |
| 25   | Outlet Solenoid                          | WB8817    |                                  |
| 26   | Transformer                              | WB8820    |                                  |
| 27   | Main PCB (New) R600                      | WB8811RN  | From serial no AA23041136RN      |
| 28   | Dispensing PCB                           | WB10928   | Included with 6A, 6B             |
| 33   | Top Cover Fixings                        | WB3325    |                                  |
| 35A  | Cold Tank Assembly                       | WB8813    |                                  |
| 35B  | Cold Tank Assembly Tabletop              | WB8813T   |                                  |
| 36   | Compressor Relay (Daewoo)                | WB3355NR  | For serial numbers ending in "R" |

AA First is a division of Circon Ltd: Registered in England 5121722

European HQ:

Cedar House  
Grange Farm  
Long Lane  
Newbury  
RG14 2TF

T: +44 (0) 1635 202489  
E: enquiries@aafirst.co.uk  
W: aafirst.co.uk

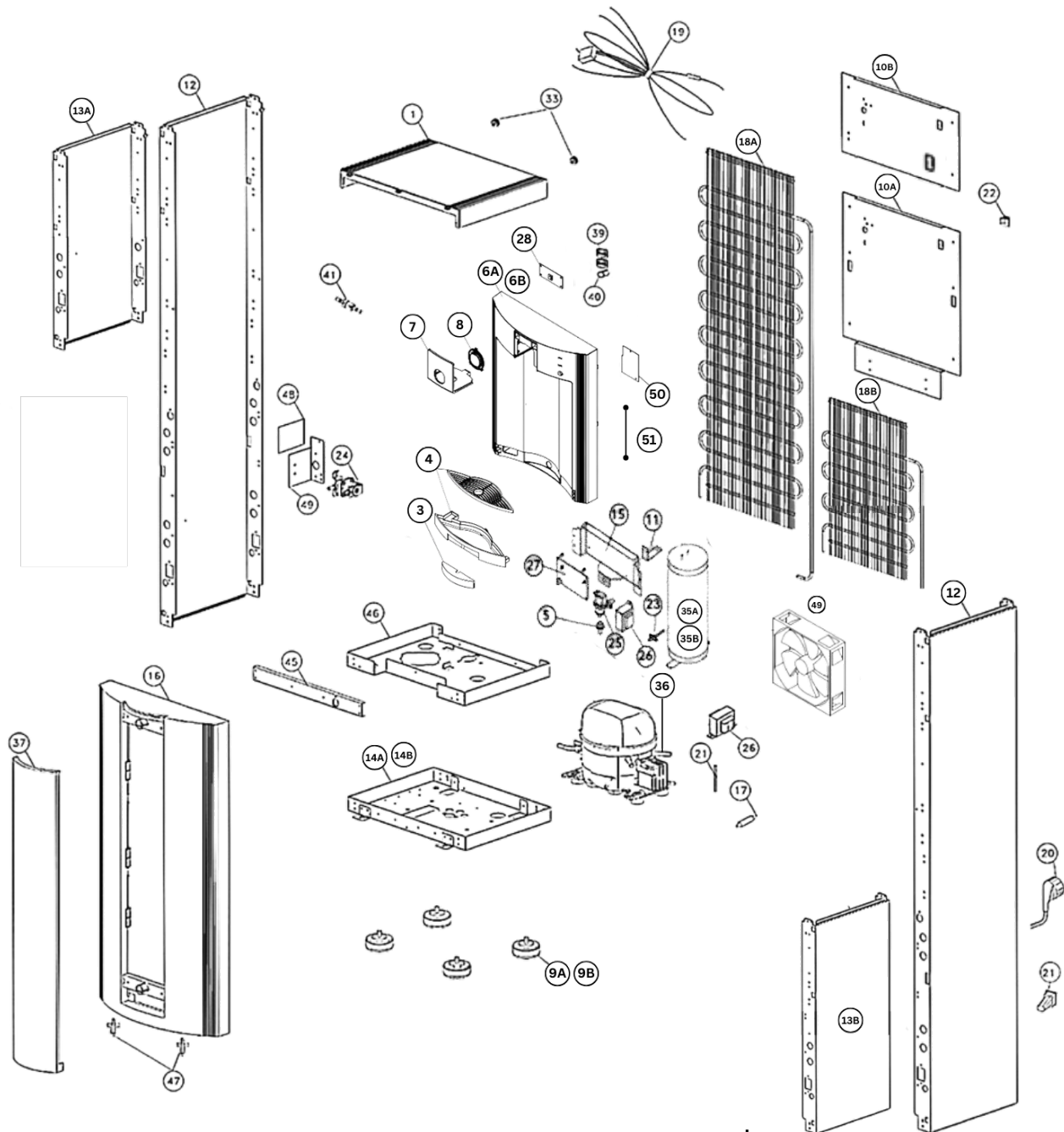
French HQ:

T: +33 (0) 674437445  
E: derek@aafirst.eu  
W: aafirst.fr

T: +33 (0) 640650708  
E: lesley@aafirst.eu  
W: aafirst.de  
W: aafirst.eu



| NO. | DESCRIPTION                           | CODE     | REMARKS                         |
|-----|---------------------------------------|----------|---------------------------------|
| 37  | Lower Facia Blanking Panel            | WB332733 |                                 |
| 39  | Led Windows                           |          | Included with 6A,6B WB10806C(L) |
| 40A | White Windows (Round)                 |          | Included with 6A. WB10806C      |
| 40B | Purple Window (Round)                 |          | Included with 6B. WB10806CL     |
| 47  | Panel Fixing Springs                  | WB3308   |                                 |
| 48  | Tank Shelf                            | WB8821   |                                 |
| 49  | Cooling Fan                           | WB8815   | For tabletop models only        |
| 50  | Led PCB only compatible with WB8811RN | WB8850RN | Included with 6A. WB10806C      |
| 51  | Wire to Connect Led PCB to Main PCB   | WB8851RN | From serial no AA23041136RN     |



AA First is a division of Circon Ltd: Registered in England 5121722

European HQ:

Cedar House  
Grange Farm  
Long Lane  
Newbury  
RG14 2TF  
T: + 44 (0) 1635 202489  
E: enquiries@aafirst.co.uk  
W: aafirst.co.uk

French HQ:

T: +33 (0) 674437445  
E: derek@aafirst.eu  
W: aafirst.fr  
W: aafirst.de  
W: aafirst.eu  
T: +33 (0) 640650708  
E: lesley@aafirst.eu  
W: aafirst.fr  
W: aafirst.de  
W: aafirst.eu

